

Commercial in Confidence

**Skye-Harris Cable Survey
XOCEAN Notice to Mariners**

Date of Issue:

- Original issue: 29 May 2026
- Revision 01: 02 June 2026
- Revision 02: 17 June 20226: Update to planned survey start date
- Revision 03: 25 June 2026: Update to planned survey start date
- Revision 04: 25 June 2026: Support Vessel details included
- **Revision 03: 02 July 2026: Update to planned survey start date**

Survey Activities: XOCEAN is planning the collection of geophysical data using remotely piloted Uncrewed Surface Vessels (USVs) along the cable route between Ardmore-Skye and Flodabay-Harris. The USVs are expected to operate out of Tarbert for the full survey duration. A mix of USVs with both hull mounted survey sensors (Multibeam Echosounders & Sub-Bottom Profilers) and also towed sensors (SideScan Sonar & Magnetometer) through the water in proximity of the seabed will be used. A crewed Support Vessel will be chartered throughout the survey to support the USVs with departures and arrivals from Tarbert and assist in towing them back in if a technical issue occurs.

Dates/Duration: Operations commence in 8th July 2026. It is expected that the survey activities shall run for approximately 30 days, subject to weather.

Survey Area: Figure 1 below indicates the operational area including a 500m buffer from the survey corridor. Coordinates delineating the area are in Table 1 below also.

If mariners believe our operations will interact with their activities then they should get in touch via the FIR/FLO.

Legal Notice

Please be advised that this Notice to Mariners should be treated as official notice of the nature, duration and location of the works which are scheduled to take place. During the period of this notice, we request that you plan your activities around our short-term, temporary activities.

Any failure to remove equipment where this has been requested, or entry into the identified location in a manner that would constitute a hazard may be a breach of your duties of safe seamanship as described in the Convention on International Regulations for Preventing Collisions at Sea 1972 and/or the Merchant Shipping Act 1995, and may result in removal of the relevant equipment. Failure to remove equipment, where this has been requested, or entry into the identified location in a manner that would constitute a hazard may constitute a breach of duty of care at common law, and a failure to protect submarine cables for successful seabed user co-existence under Scotland's National Marine Plan.

SHEPD shall found on this notice in the event of any damage, loss or disruption arising from failure to heed the information herein.

Commercial in Confidence

Figure 1: Overall Survey Area

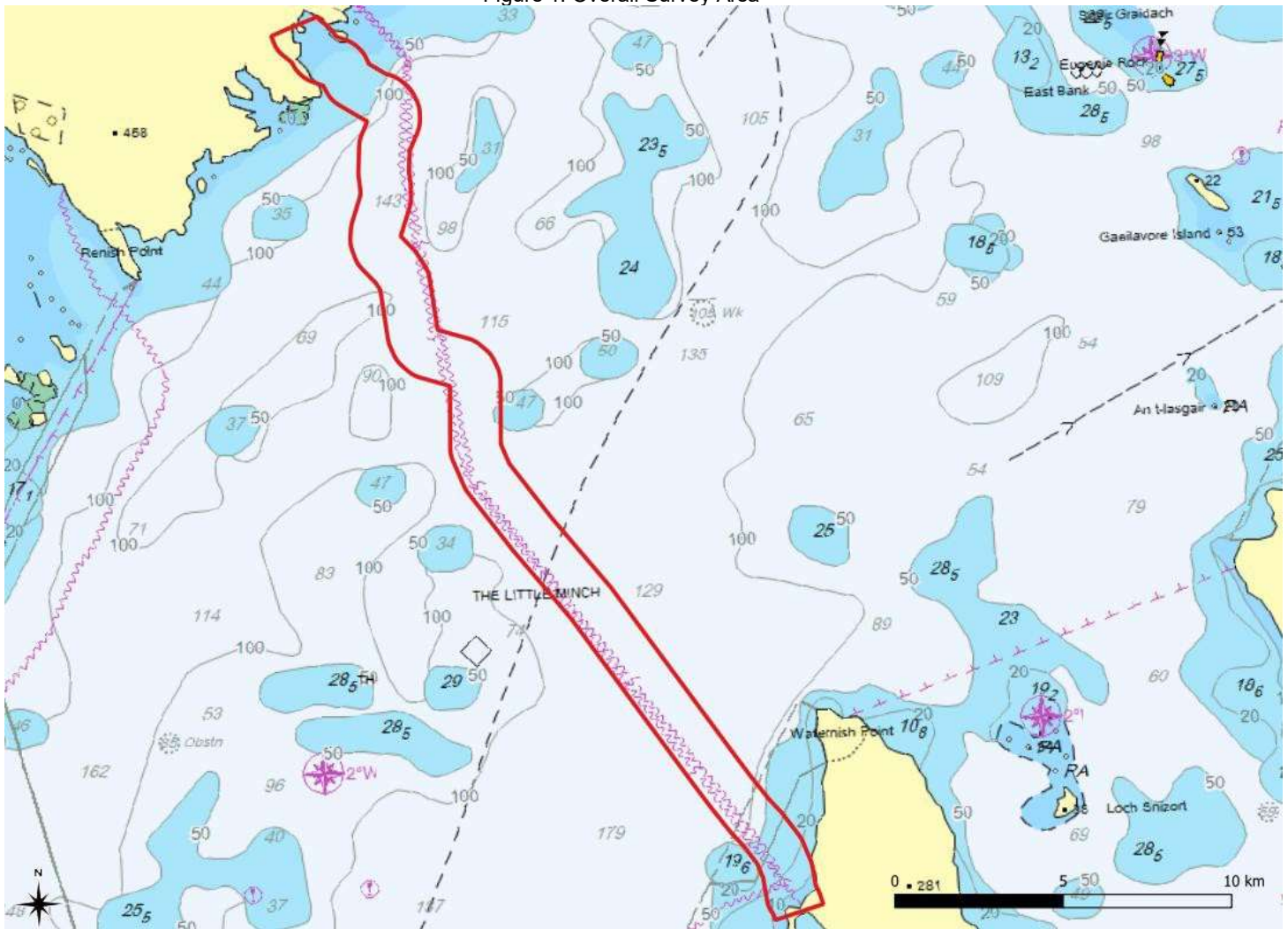


Table 1: Operational area coordinates (WGS84)

Lat_DM	Lon_DM
57°42.58022'N	6°50.57333'W
57°34.03231'N	6°38.47875'W
57°33.65656'N	6°38.37228'W
57°33.36019'N	6°38.16845'W
57°33.13217'N	6°39.61097'W
57°33.38403'N	6°39.81082'W
57°33.81075'N	6°39.92850'W
57°34.03805'N	6°40.08671'W
57°34.97936'N	6°41.43036'W
57°42.10061'N	6°47.33376'W
57°41.97019'N	6°47.27058'W
57°40.88369'N	6°47.31645'W
57°40.56653'N	6°47.08076'W
57°39.67279'N	6°45.86398'W
57°38.53315'N	6°44.16887'W
57°35.44887'N	6°40.20531'W
57°34.45604'N	6°38.79504'W

NOTICE TO MARINERS



Commercial in Confidence

57°45.28002'N	6°49.79788'W
57°44.81564'N	6°49.76883'W
57°44.24957'N	6°50.09579'W
57°43.99455'N	6°49.66654'W
57°43.67525'N	6°49.32938'W
57°42.73583'N	6°49.07727'W
57°42.55268'N	6°48.03503'W
57°42.30547'N	6°47.51721'W
57°47.02345'N	6°50.89333'W
57°46.85331'N	6°50.38924'W
57°46.75890'N	6°49.99717'W
57°46.64777'N	6°49.75906'W
57°46.53696'N	6°49.60525'W
57°46.30140'N	6°49.43288'W
57°47.24942'N	6°53.54672'W
57°46.05353'N	6°49.42605'W
57°47.34210'N	6°53.66708'W
57°45.60948'N	6°49.75961'W
57°47.52434'N	6°53.79900'W
57°47.80459'N	6°52.37925'W
57°47.76139'N	6°52.34936'W
57°47.58353'N	6°51.98043'W
57°47.48089'N	6°51.86252'W
57°47.37906'N	6°51.41053'W
57°47.26941'N	6°51.15653'W
57°45.77327'N	6°51.24943'W
57°46.10966'N	6°50.99466'W
57°46.41539'N	6°51.91536'W
57°46.51379'N	6°52.09431'W
57°46.70008'N	6°52.28024'W
57°46.85609'N	6°52.88387'W
57°46.97130'N	6°53.08400'W
57°47.08299'N	6°53.19399'W
57°43.40636'N	6°50.76712'W
57°43.51661'N	6°50.88882'W
57°43.82966'N	6°51.40337'W
57°44.09357'N	6°51.58985'W
57°44.22862'N	6°51.61675'W
57°44.44996'N	6°51.57051'W
57°44.92914'N	6°51.27164'W
57°45.28193'N	6°51.31152'W
57°38.05558'N	6°45.38518'W
57°39.17999'N	6°47.05933'W
57°40.16861'N	6°48.39895'W
57°40.76974'N	6°48.82189'W
57°41.83809'N	6°48.77736'W
57°42.02940'N	6°49.84467'W
57°42.28313'N	6°50.34552'W

Commercial in Confidence

The details of the Uncrewed Surface Vessels (USVs) that will operate on the survey are shown below. It is expected that no more than 2 USVs will be operational at any one time.

Table 2: USVs with Hull Mounted Sensors

AIS Name:	X 23 UNCREWED	X 26 UNCREWED
MMSI:	232044015	232052508
Callsign:	MMIM8	MOQM9
Length:	4.5m	4.5m
Beam:	2.2m	2.2m
Speed:	3.5kts	3.5kts
Draught:	1.5m	1.5m
Tonnage:	1.1Tn	1.1Tn

Table 3: USVs with Towed Sensors

AIS Name:	X 06 UNCREWED	X 17 UNCREWED	X 28 UNCREWED	X 29 UNCREWED	X05 UNCREWED
MMSI:	232025477	232039414	232053988	232053990	232059837
Callsign:	MGMK5	MKMB4	MOXJ2	MOXJ4	MRSM9
Length:	4.5m	4.5m	4.5m	4.5m	4.5m
Beam:	2.2m	2.2m	2.2m	2.2m	2.2m
Speed:	2.5kts	2.5kts	2.5kts	2.5kts	2.5kts
Draught:	1.5m	1.5m	1.5m	1.5m	1.5m
Tonnage:	1.1tn	1.1Tn	1.1Tn	1.1Tn	1.1Tn

Situational Awareness: Although the USVs are uncrewed, they are remotely piloted throughout the 24-hour operation. The USV sends real time images and situational awareness data over satellite to allow this monitoring. The situational awareness aids available are listed below.



Figure 2: USV with hull mounted sensors

Commercial in Confidence



Figure 3: USV with towed sensors

Safety Precautions: The USV is equipped with the following to make it conspicuous to other marine traffic:

- AIS
- VHF
- Navigation Lights & Sound Signals
- Active Radar Reflector

Exclusion Area / Closest Point of Approach: Seafarers are kindly asked to provide a clearance of >500m from the USVs at all times when they are in operation.

Support Vessel: The USVs operations will be supported by a crewed Support Vessel. XOCEAN plan to charter in the *Challenger*, owned and operated by SeaTrek Marine and be based in Tarbert for the work.

	<i>Challenger</i>
MMSI:	232022713
Callsign:	MFMI7
Draught:	1.4m



Commercial in Confidence

XOCEAN Marine & Operations Contact Details:

Name & Role	Mobile Number	Email Address
XOC Lead Fleet Shift Lead (continually rostered)	+353 1 223 9950	XOC@xocean.com
Deirdre Fahy Project Manager	+353 1 223 9988	Deirdre.fahy@xocean.com
Stephen Leydon Marine Superintendent	+353 1 223 9955	stephen.leydon@xocean.com
Clodagh Cunningham Programme Manager	+353 87 676 8806	clodagh.cunningham@xocean.com

Commercial in Confidence

Fishing Liaison Officers:

Fishing liaison for the operations will be co-ordinated by Brown and May Marine. For any commercial fishery queries please contact the Company Fishing Liaison Officers (CFLOs):

Name	Contact Number	Email
Meg Kalafat	07702 710176	Meg.kalafat@brownmay.com

The local Fishing Industries Representative (FIR) will also be in place to liaise with the vessels and fishing operations in the survey area.

Name	Contact Number	Email
Alex Murdo Murray	07539 282506	alexmurdo153@gmail.com