



OCEAN ECOLOGY
A DNV COMPANY

Marine Benthic Survey Notification



Marine Benthic Survey Notification – MachairWind Benthic Survey

Date: Earliest commencement date: 8th July. Expected completion date: 26th August, weather dependant

From: Head of Survey

Contact Details

Ocean Ecology Ltd Head of Survey

Name: Ashley Kirby

Email: Ashley.kirby@dnv.com

Telephone: 01452 740697 or 01452 915698

Ocean Ecology Ltd Managing Director

Name: Gary Robinson

Email: Gary.robinson@dnv.com

Telephone: 01452 740697 or 07969 559716

Overview

Please be advised that from the 8th July 2026 (earliest commencement date) Ocean Ecology Ltd (OEL) will be undertaking drop-down camera (DDC), seabed grab and water sampling surveys within the areas shown in Figure 1. The survey will employ the use of a DDC system for visual seabed assessments, 0.1m² Dual Van Veen and Hamon grabs to obtain sediment samples of the seabed, as well as Niskin water sampling devices. The works will be completed by personnel from OEL on the vessel *Roman Rebel*. Full vessel details are presented in Table 1. The survey operations do not involve towed survey equipment however at some locations the DDC will be slowly manoeuvred along transect lines at ~0.5 knots. During deployment of equipment the vessel will be under restricted manoeuvrability and require sufficient vessel to vessel clearance for safe working. During periods of poor weather, the vessel may return to port or alternative safe haven for shelter.

This notification is intended for circulation to all interested parties undertaking or managing activities in the vicinity of the planned survey works. If you would like further details regarding the surveys, please contact the OEL Head of Survey, Ashley Kirby using the contact details at the head of this communication.

Liaison and General Operational Principles

1. The survey contractor will ensure advance notice of survey works is provided to all marine users.
2. During the survey, should areas of high fishing density be identified, best efforts will be made to modify survey plans (either the location of survey sites or timing of operations) to avoid damage to both survey and fishing equipment.

Project FLO Details


A project FLO is assigned to this work. For any specific enquiries required for the FLO please contact:

Fisheries Liaison Officer - Brown & May Marine Ltd.

Zoë Lawrence

zoe@brownmay.com | +44 (0) 7923 138175

Table 1. Vessel Details

| | | |
|--------------------|--|--|
| Vessel Name | Roman Rebel |  |
| Vessel Call Sign | 2ICA5 | |
| MMSI | 9714824 | |
| Length | 27.5 m | |
| Survey Coordinator | Ashley Kirby (OEL Head of Survey) +44 (0)1452 915698 | |
| Vessel Contact | Alan Cott (Green Rebel Fleet Manager) +353 (86) 4505830 | |

Survey Locations

Table 2. Coordinates defining general survey area for the MachairWind Benthic Survey

| Point | Latitude (DD WGS84) | Longitude (DD WGS84) | Latitude (DDM WGS84) | Longitude (DDM WGS84) | Point | Latitude (DD WGS84) | Longitude (DD WGS84) | Latitude (DDM WGS84) | Longitude (DDM WGS84) |
|-------|---------------------|----------------------|----------------------|-----------------------|-------|---------------------|----------------------|----------------------|-----------------------|
| 1 | 55.303198 | -4.837523 | 55° 18.192' N | 004° 50.251' W | 27 | 55.869868 | -6.797397 | 55° 52.192' N | 006° 47.844' W |
| 2 | 55.37137 | -5.264659 | 55° 22.282' N | 005° 15.88' W | 28 | 56.035114 | -6.950783 | 56° 2.107' N | 006° 57.047' W |
| 3 | 55.246642 | -4.860021 | 55° 14.799' N | 004° 51.601' W | 29 | 56.04688 | -6.90974 | 56° 2.813' N | 006° 54.584' W |
| 4 | 55.188444 | -4.956199 | 55° 11.307' N | 004° 57.372' W | 30 | 55.903389 | -6.77177 | 55° 54.203' N | 006° 46.306' W |
| 5 | 55.163238 | -5.252054 | 55° 9.794' N | 005° 15.123' W | 31 | 55.920338 | -6.671207 | 55° 55.22' N | 006° 40.272' W |
| 6 | 55.206834 | -5.347577 | 55° 12.41' N | 005° 20.855' W | 32 | 55.954802 | -6.62564 | 55° 57.288' N | 006° 37.538' W |
| 7 | 55.221054 | -5.353446 | 55° 13.263' N | 005° 21.207' W | 33 | 56.009768 | -6.487503 | 56° 0.586' N | 006° 29.25' W |
| 8 | 55.201771 | -5.494513 | 55° 12.106' N | 005° 29.671' W | 34 | 55.991458 | -6.462386 | 55° 59.487' N | 006° 27.743' W |
| 9 | 55.19975 | -5.572403 | 55° 11.985' N | 005° 34.344' W | 35 | 55.931381 | -6.597639 | 55° 55.883' N | 006° 35.858' W |
| 10 | 55.212916 | -5.699017 | 55° 12.775' N | 005° 41.941' W | 36 | 55.906621 | -6.631753 | 55° 54.397' N | 006° 37.905' W |
| 11 | 55.207819 | -5.712603 | 55° 12.469' N | 005° 42.756' W | 37 | 55.837624 | -6.733976 | 55° 50.257' N | 006° 44.039' W |
| 12 | 55.234487 | -5.816752 | 55° 14.069' N | 005° 49.005' W | 38 | 55.750398 | -6.664218 | 55° 45.024' N | 006° 39.853' W |
| 13 | 55.263725 | -5.857356 | 55° 15.823' N | 005° 51.441' W | 39 | 55.71015 | -6.659692 | 55° 42.609' N | 006° 39.582' W |
| 14 | 55.299759 | -5.865721 | 55° 17.986' N | 005° 51.943' W | 40 | 55.680214 | -6.619095 | 55° 40.813' N | 006° 37.146' W |
| 15 | 55.361716 | -5.92493 | 55° 21.703' N | 005° 55.496' W | 41 | 55.639229 | -6.57335 | 55° 38.354' N | 006° 34.401' W |
| 16 | 55.38758 | -5.943623 | 55° 23.255' N | 005° 56.617' W | 42 | 55.602379 | -6.445775 | 55° 36.143' N | 006° 26.747' W |
| 17 | 55.431281 | -5.955645 | 55° 25.877' N | 005° 57.339' W | 43 | 55.518428 | -6.234528 | 55° 31.106' N | 006° 14.072' W |
| 18 | 55.507402 | -6.243043 | 55° 30.444' N | 006° 14.583' W | 44 | 55.441146 | -5.932277 | 55° 26.469' N | 005° 55.937' W |
| 19 | 55.556963 | -6.388212 | 55° 33.418' N | 006° 23.293' W | 45 | 55.391022 | -5.903295 | 55° 23.461' N | 005° 54.198' W |
| 20 | 55.589961 | -6.458294 | 55° 35.398' N | 006° 27.498' W | 46 | 55.308332 | -5.830449 | 55° 18.5' N | 005° 49.827' W |
| 21 | 55.582538 | -6.70023 | 55° 34.952' N | 006° 42.014' W | 47 | 55.274235 | -5.819806 | 55° 16.454' N | 005° 49.188' W |
| 22 | 55.597249 | -6.75662 | 55° 35.835' N | 006° 45.397' W | 48 | 55.217249 | -5.652079 | 55° 13.035' N | 005° 39.125' W |
| 23 | 55.702087 | -6.868962 | 55° 42.125' N | 006° 52.138' W | 49 | 55.233827 | -5.580909 | 55° 14.03' N | 005° 34.855' W |
| 24 | 55.736143 | -6.869254 | 55° 44.169' N | 006° 52.155' W | 50 | 55.258603 | -5.357342 | 55° 15.516' N | 005° 21.441' W |
| 25 | 55.755796 | -6.849904 | 55° 45.348' N | 006° 50.994' W | 51 | 55.233827 | -5.580909 | 55° 14.03' N | 005° 34.855' W |
| 26 | 55.802718 | -6.840681 | 55° 48.163' N | 006° 50.441' W | 52 | 55.258603 | -5.357342 | 55° 15.516' N | 005° 21.441' W |

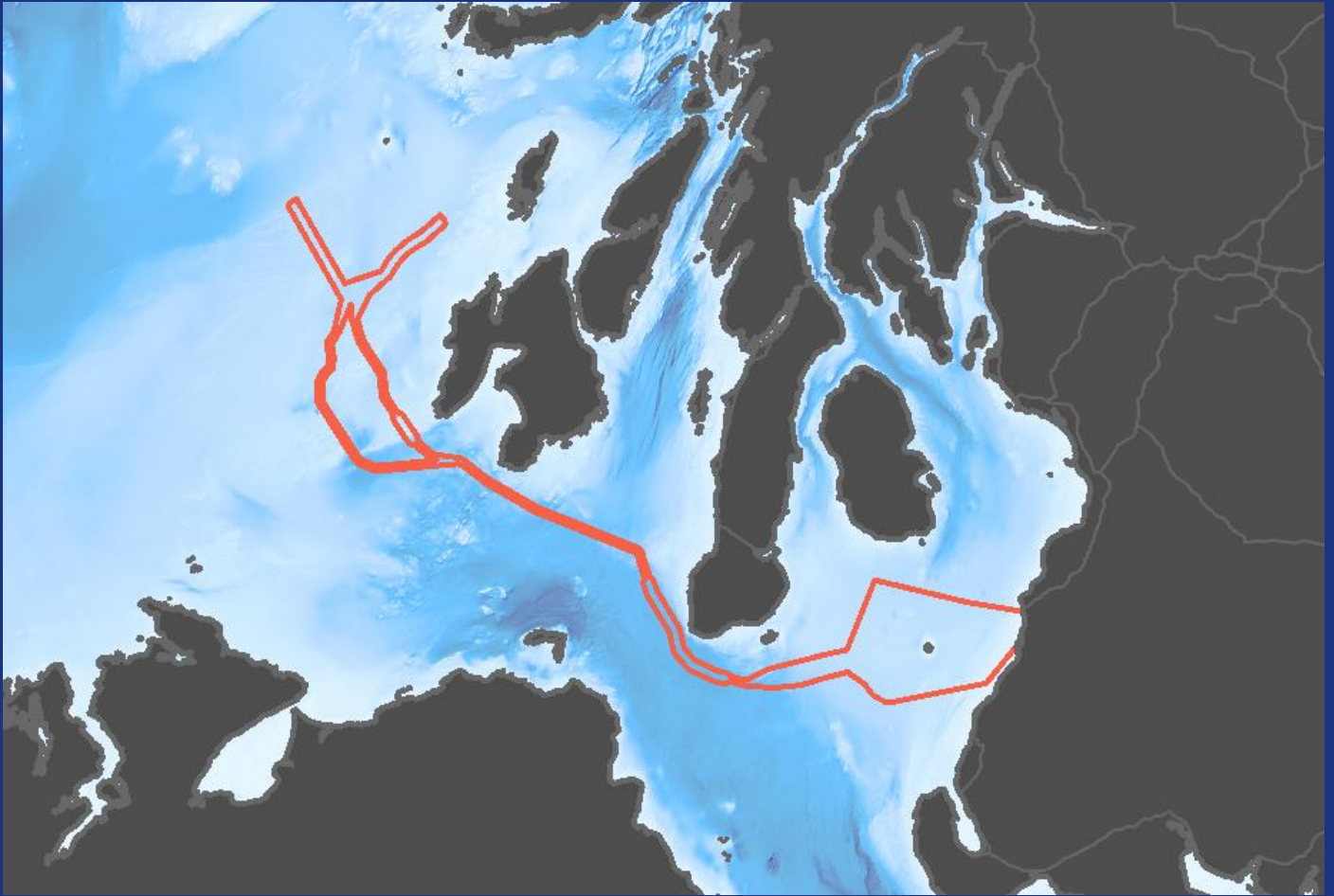


Figure 1. MachairWind Benthic Survey area.

NOTICE TO MARINERS DISTRIBUTION LIST

A list of recipients for the Notice to Mariners is kept by the MachairWind Project Team. If you wish to be added to this list, please contact machairwind@scottishpower.com .

Gloucester (Head Office)

River Office,
Sevenside Park,
Epney, Gloucester,
GL2 7LN

Oban

Malin House,
European Marine Science Park,
Dunbeg, Oban,
PA37 1SZ

Dorchester

Battlelab,
Dorset Innovation Park, Dorset,
DT2 8GB

Plymouth

Plymouth Science Park,
Plymouth, Devon,
PL6 8BX

Plymouth

Unit 8 Strashleigh View,
Lee Mill Industrial Estate,
Plymouth, Devon,
PL21 9GS

+44 (0) 1452 740697 oeg.info@dnv.com www.ocean-ecology.com @Ocean_Ecology

