

# Notice to Mariners

Scottish Hydro Electric Power Distribution (SHEPD)

PH003762 Skye-Uist Replacement

Date of Issue: 27<sup>th</sup> May 2026

## Notice to Mariners

Please be advised that Jan De Nul Luxembourg S.A. shall be undertaking power cable installation and power cable protection activities for the Skye-Uist Replacement project. Subject to the granting of the necessary licences, the project will install two new subsea power cables. One between Loch Pooltiel on the Isle of Skye and Loch Carnan on the Isle of South Uist and the other one between Ardmore on Isle of Skye and Loch Pooltiel on Isle of Skye.

This notice supersedes the earlier Notice to Mariners dated 19/05/2026 and includes an updated start date for the Route survey and preparation works in Table 1

The works will be carried out by several vessels which are listed further in this NtM.

An overview of the cable routes is shown in Figure 1 (Skye to South Uist cable) and Figure 2 (for the Skye Interlink).

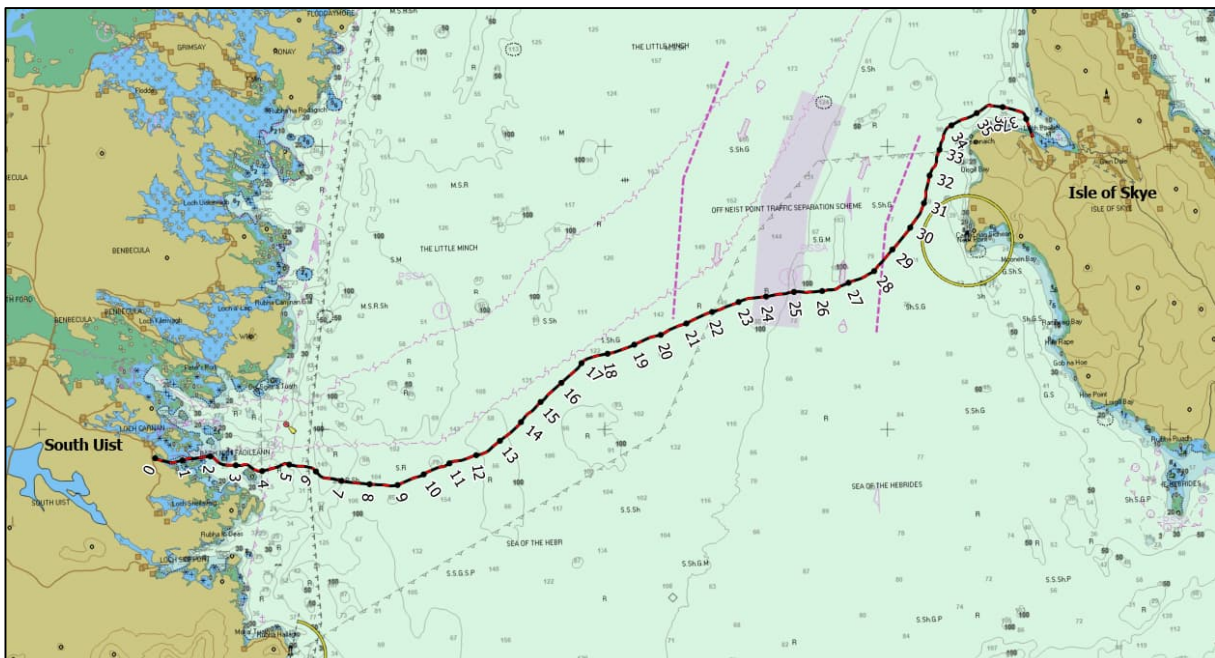


Figure 1: Loch Pooltiel on the Isle of Skye and Loch Carnan on Isle of South Uist Cable route Overview

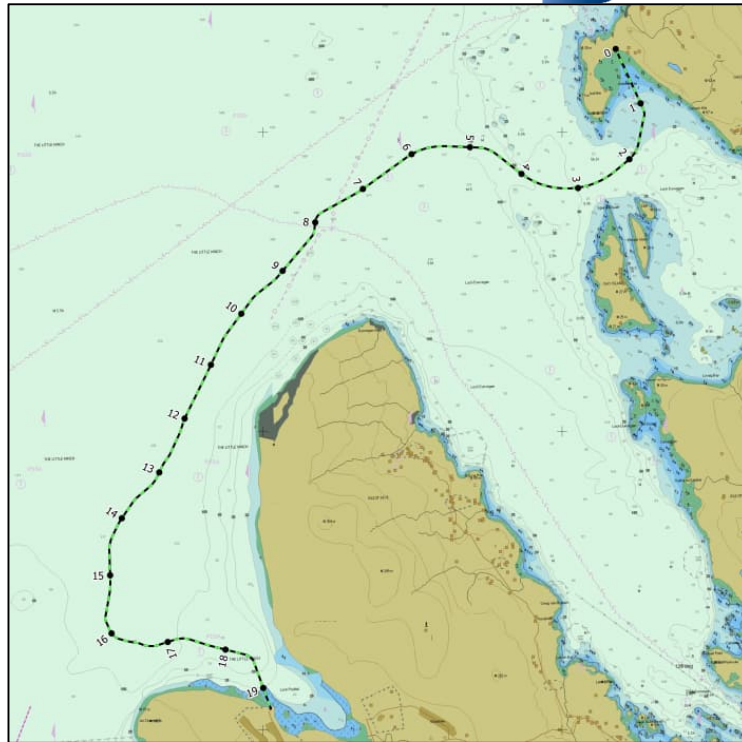


Figure 2: Ardmore on Isle of Skye and Loch Pooltiel on Isle of Skye Cable route Overview

The working area required for duration of the activities is defined as a corridor extending  $\pm 250$  m ( $\pm$  meaning “either side”) around the entire future cable route centerlines. An overview of this working zone across the Little Minch is shown in Figure 3 below. Coordinates of the polygon are listed in Table 4 at the end of this NtM.

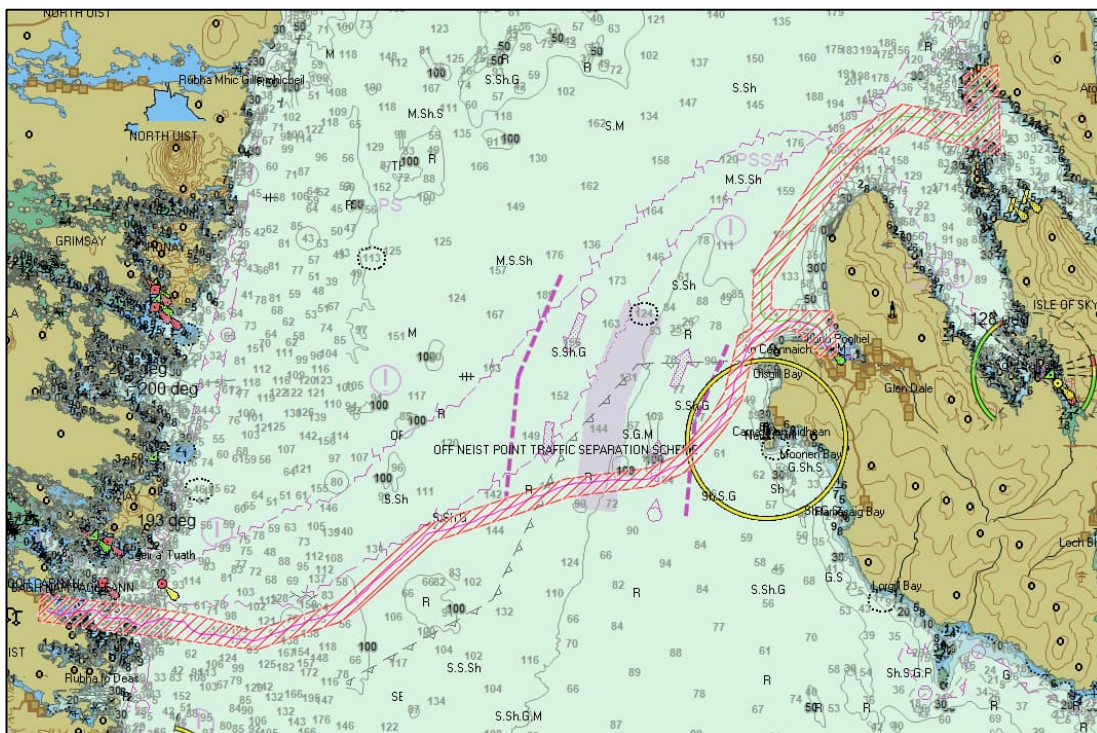


Figure 3: Project working area / working zone across the Little Minch

Figure 4, Figure 5 & Figure 6 below show a closer views of the working corridor at Loch Carnan, Loch Pooltiel and Ardmore landfalls, respectively.

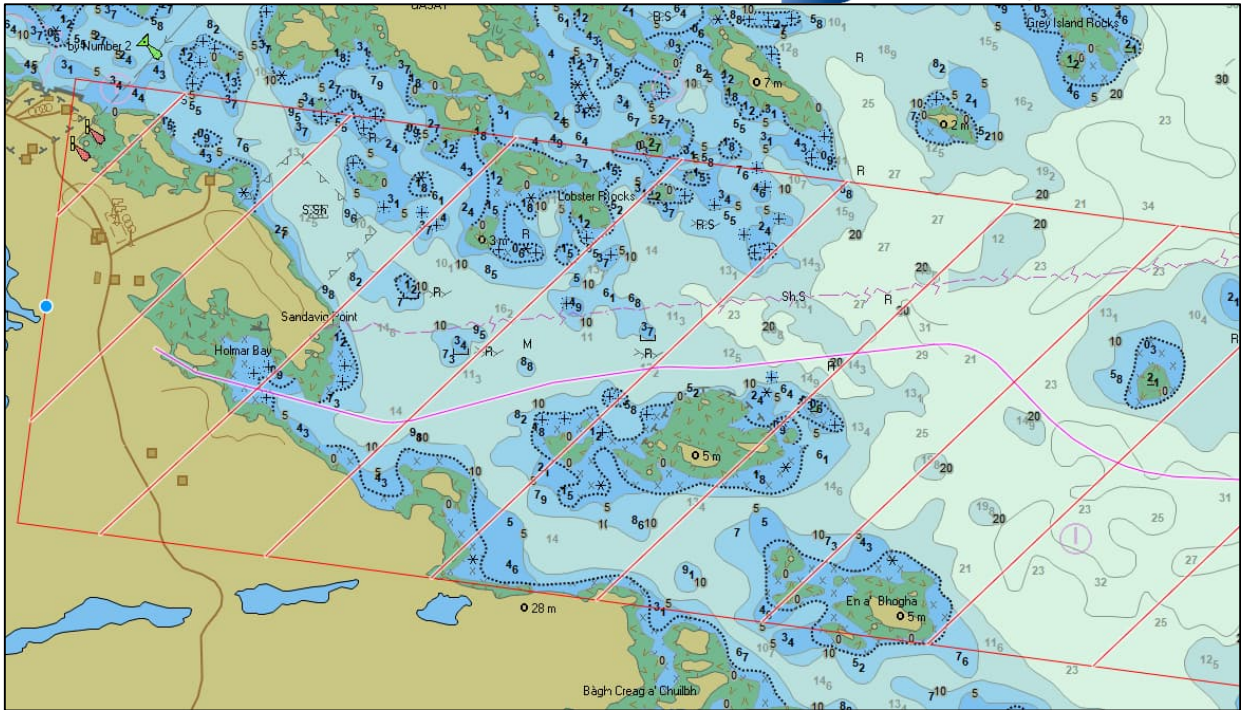


Figure 4: Project working area / working zone zoomed at Loch Carnan (Isle of South Uist)

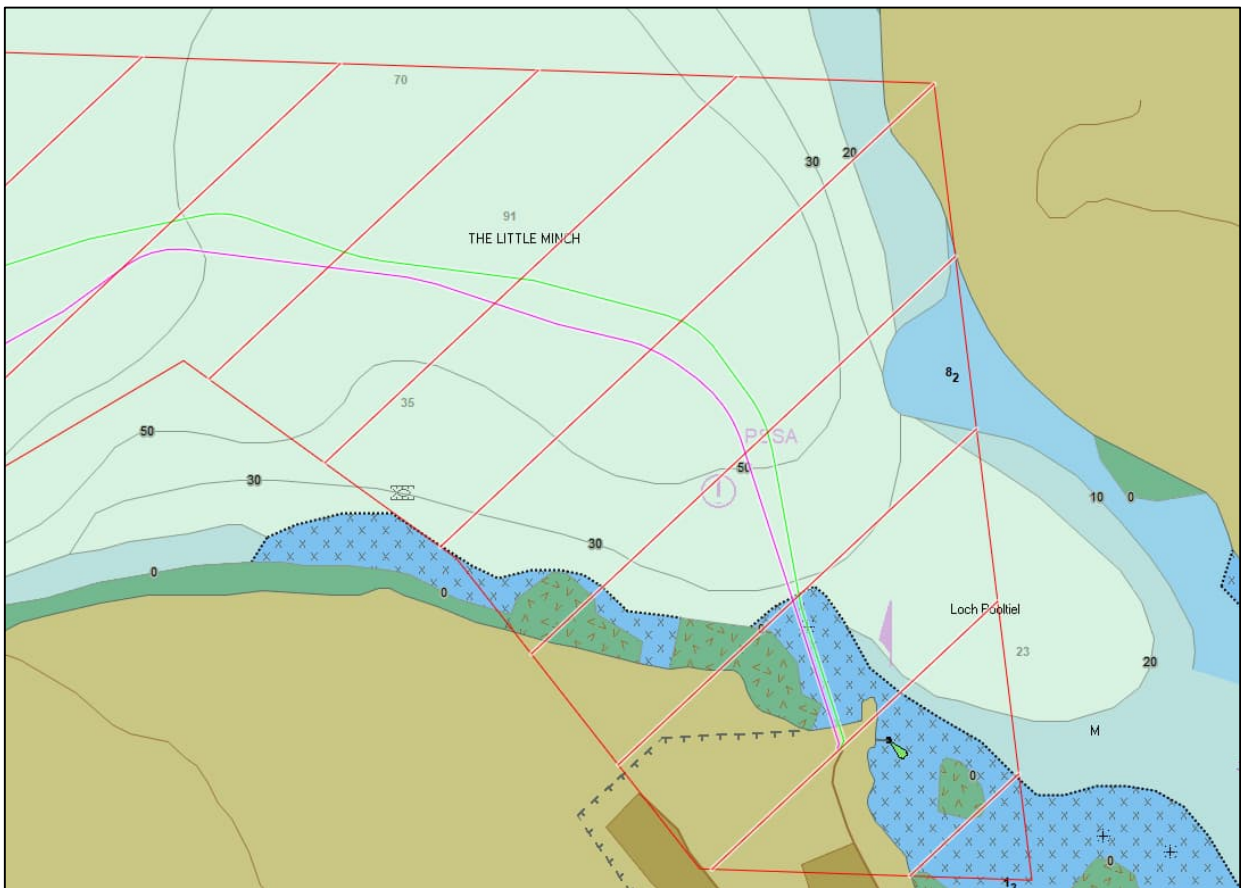


Figure 5: Project working area / working zone zoomed at Loch Pooltiel (Isle of Skye)

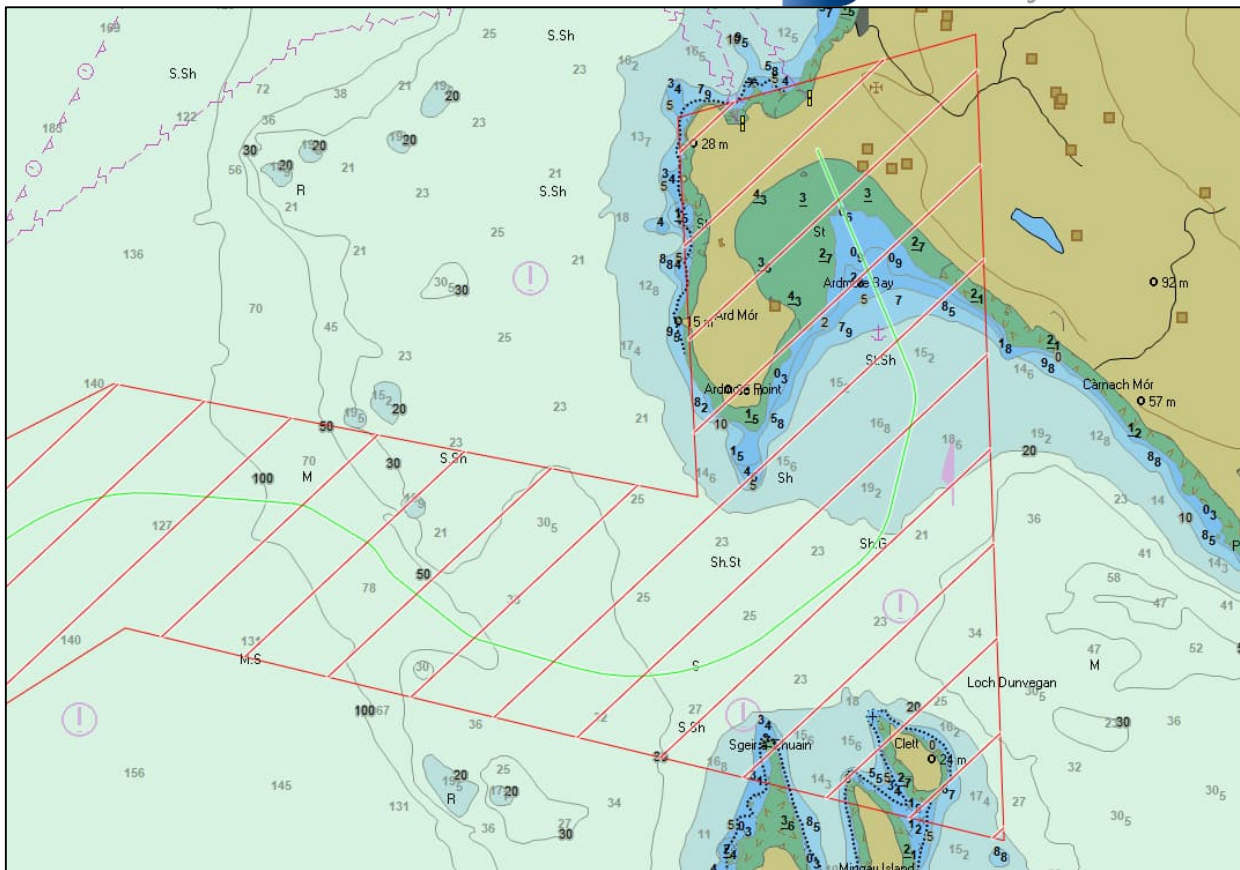


Figure 6: Project working area / working zone zoomed at Ardmøre Bay (Isle of Skye)

### LEGAL NOTICE

Please be advised that this Notice to Mariners should be treated as official notice of the nature, duration and location of the works which are scheduled to take place. During the period of this notice, we request that you plan your activities around our short-term, temporary activities.

Any failure to remove equipment or entry into the identified location in a manner that would constitute a hazard may be a breach of your duties of safe seamanship as described in the Convention on International Regulations for Preventing Collisions at Sea 1972 and/or the Merchant Shipping Act 1995, and may result in removal of the relevant equipment. Failure to remove equipment or entry into the identified location in a manner that would constitute a hazard may constitute a breach of duty of care at common law, and a failure to protect submarine cables for successful seabed user co-existence under Scotland's National Marine Plan.

**SEEN shall found on this notice in the event of any damage, loss or disruption arising from failure to heed the information herein.**

## Schedule of Operations

A summary of the Schedule of Operations for the installation activity is shown below in Table 1.


Table 1: Schedule of Operations




Dates	Vessel scope	Vessel(s)
05 June to 30 June 2026	Route survey and preparation works	MV Trym
05 June to 31 August 2026	Survey activities: pre-lay and as-built	Nearshore support vessels Connector Adhémar de Saint-Venant Simon Stevin
20 June to 31 July 2026	Submarine Power Cable Installation	Connector Multiple cable pull-in support vessels Dive support vessels
01 July to 31 August 2026	Submarine Power Cable protection	Adhémar de Saint-Venant Simon Stevin





## Details of Vessel and Equipment

The vessels that are currently planned to carry out the marine survey activities are listed in Table 2 below.

Table 2: Vessel Details

Vessel Photo	Vessel Description
	<p>MV Trym            Owner : Sea Shipping            Built : 2006            LOA: 73 m            Breadth moulded ; 16 m,            Max. draft : 5.84 m            Call Sign: LNXA3            IMO No: 9342724            MMSI No: 257862000            Flag : Norway</p> <p>Tel : +47 948 97 071            Immarsat : +88 164 417 08477            Email : bridge.trym@seashipping.no</p> <p>Offshore Management :            tr1offman@helixesg.com            +44 1224 335 891</p>

Vessel Photo	Vessel Description
	<p>Connector – Cable lay vessel            LOA: 156.9m, Breadth: 32 m,            Draft: 8.7 m            Call Sign: LXEV            IMO No: 9435480            MMSI No: 253751000            Flag : Luxembourg</p> <p>Mobilized with 2 x Shilling HD Work Class ROV</p> <p>Tel : 00 32 935 20 310            Immarsat : 00 881 677 105 866            email: bridge@ct.jandenul.com</p>
	<p>Adhémar de Saint-Venant –            Trenching supporting vessel            LOA: 95m, Breadth: 22 m, Draft:6.5m            Callsign : LXUD</p> <p>IMO No: 9778703            MMSI No: 253351000            Flag : Luxembourg</p> <p>Mobilized with 1 x WROV 150HP work class type Triton XLS and 1 x trenching ROV UTV1200</p> <p>Tel : 00 32 509 460 17            Immarsat : 00 881 677 701 745            email: bridge@ad.jandenul.com</p>
	<p>Simon Stevin – Subsea rock installation vessel            Owner : Jan de Nul            Built : 2010            LOA: 191.5m, Breadth: 40 m, Draft: 9.25 m            Callsign : LXUB</p> <p>IMO No: 9464807            MMSI No: 253309000            Flag : Luxembourg</p> <p>Tel : 00 32 569 46 124            Immarsat : 00 881 677 733 700            email: bridge@sv.jandenul.com</p>

Vessel Photo	Vessel Description
	<p>Celtic Trader – Landcraft vessel</p> <p>Cable pull-in support vessel and equipment logistics LOA: 10m, Breadth: 4.0m Draft : 1.5m Call Sign: 21QW5 MMSI No: 235112043 Flag : United Kingdom</p> <p>Email: nicolas.jeannelle@jandenul.com</p>
	<p>Celtic Nomad – RHIB</p> <p>Cable pull-in support vessel LOA: 11m, Breadth: 4.0m Call Sign: 2FYF4</p> <p>MMSI No: 235095248 Flag : United Kingdom</p> <p>Email: nicolas.jeannelle@jandenul.com</p>
	<p>Celtic Mara – RHIB</p> <p>Cable pull-in support vessel LOA: 11m, Breadth: 3.4m Call Sign: 2GLP3 MMSI No: 235095248 Flag : United Kingdom</p> <p>Email: nicolas.jeannelle@jandenul.com</p>
	<p>Celtic Voyager – RHIB</p> <p>Cable pull-in support vessel LOA: 11m, Breadth: 4.0m Call Sign: 2AXB3 MMSI No: 235063646 Flag: United Kingdom</p> <p>Email: nicolas.jeannelle@jandenul.com</p>






Vessel Photo	Vessel Description
	<p>OEG Venture</p> <p>Crew Transfer Vessel LOA: 27m, Breadth: 12m Draft : 2.3m Call Sign: MAWI6 MMSI No: 232007444 Flag: United Kingdom</p> <p>Email: nicolas.jeannelle@jandenul.com</p>
	<p>Marendeavour Eurocarrier 2209 Multicat</p> <p>Cable pull-in support vessel and Dive support vessel LOA:22m, Breadth: 9m, Draft : 2m Call Sign: MMPC MMSI No: 235051664 Flag: United Kingdom</p> <p>Email: nicolas.jeannelle@jandenul.com</p>
	<p>CFMS Tempest</p> <p>Cable pull-in support vessel and Dive support vessel LOA: 11.7m, Breadth: 3.6m Draft : 0.6m Call Sign: MYUY7 MMSI No: 232003835 Flag: United Kingdom</p> <p>Email: nicolas.jeannelle@jandenul.com</p>
	<p>Fusion Marine Diving assistance workboat</p> <p>Cable pull-in support vessel LOA: 4.9m, Breadth: 2.08m</p> <p>Email: nicolas.jeannelle@jandenul.com</p>

Table 3: Equipment Details

Equipment Photo	Equipment Description
	<p>Work-class ROV (WROV) Triton XLS27 150hp</p> <p>will be deployed from Adhémar de Saint-Venant will be deployed from MV Trym</p> <p>Length: 3 m Width: 1.85 m Height: 2 m Weight in Air: 4,309 kg</p>
	<p>WROV Shilling HD Remotely operated vehicle will be used and deployed from Connector</p> <p>Length: 3.0m Width: 1.85m Height: 2m Weight in Air: 4.3 Te</p>
	<p>Trenching ROV UTV1200 Remotely operated vehicle will be used and deployed from Adhemar De Saint-Venant</p> <p>Length: 9.5m Width: 8.8m Height: 5.7m Weight in Air: up to 42 Te</p>
	<p>8Te Boulder grab IROV Subsea Will be deployed from MV Trym</p> <p>Dimensions 2.4 m × 2.4 m × 1.5 m high Approx weight in air: 2.5 Te Approx weight in water: 2.2 Te Type 5 Tine, Orange Peel Style Capacity approx 8 Te SWL</p>

Equipment Photo	Equipment Description
	<p>20Te Boulder grab            Subsea Tooling Services (STS) 20Te Boulder Grab will be deployed from MV Trym</p> <p>Dimensions 5.0 m × 5.0 m × 3.0 m high            Approx weight in air: 7.0 Te            Type 6 Tine, Orange Peel Style            Capacity approx. 20 Te SWL</p>

Applicable for all vessels

Equipment calibration operations may take place out of the defined corridor and these areas will be chosen so as not to interfere with fishing/shipping activity. Intermediate transits depending on operational needs can take place prior to and in between aforementioned activities.

All vehicles carrying out the work will be restricted in their ability to maneuver and will display the appropriate lights and shapes (two black spheres and in the middle a black diamond shape, in a vertical line). Other vessels are requested to pass at a safe speed and provide a minimum clearance of 500m (COLREGs Rule 16 & 18) from the vessels during marine operations. The vessels will monitor VHF Channel 16 at all times. Mobile contacts for the vessels are listed at the end of this NtM.

#### Contact Details

Name	Role	Telephone Number
Wouter Callewaert	Jan De Nul Project Manager	+32 479 70 03 13
Nicolas Jeannelle	Jan De Nul Works Manager	+32 499 56 68 42
Nirmal Van Den Bossche	Jan De Nul HQSSE Advisor	+32 471 31 08 47
Alasdair Crawford	SHEPD Project Manager	+44 7436 480 361
Garet Ross	SHEPD Safety Advisor	+44 7471 67 85 36

#### Fishing Liaison Officers

Fishing liaison for the power cable installation activities will be co-ordinated by Blackhall & Powis Ltd (B&P) fishing liaison consultant. For any commercial fishery queries please contact Tommy Finn, the Director of Marine and Fisheries (+44 778 750 31 19/ tommy.finn@blackhallpowis.com) and/or Michael Sutherland, the Specialist Advisor, Fisheries Liaison, Marine and Offshore (+44 792 848 43 43/ michael.sutherland@blackhallpowis.com). The vessel masters will issue regular broadcasts whilst works are ongoing to ensure minimal disruption and that vessels maintain an appropriate and safe distance.

#### Distribution List

The Distribution List of the Notice to Mariners is as per the stakeholder list in the Fisheries Liaison and Management Action Plan (FLMAP).

Table 4: Coordinates of working zone

Point	Latitude (Degree)	Longitude (Degree)	Easting (m)	Northing (m)
	WGS84		WGS84 UTM Zone 29N	
1	57° 21.824' N	7° 4.690' W	615596.68	6359508.69
2	57° 21.999' N	7° 4.221' W	616058.28	6359846.93
3	57° 23.539' N	7° 1.005' W	619197.24	6362796.96
4	57° 24.549' N	6° 55.335' W	624818.65	6364839.23
5	57° 24.783' N	6° 52.011' W	628133.00	6365376.25
6	57° 25.054' N	6° 50.828' W	629300.97	6365915.97
7	57° 25.877' N	6° 49.565' W	630515.92	6367482.44
8	57° 26.400' N	6° 48.973' W	631077.13	6368471.89
9	57° 27.633' N	6° 48.398' W	631578.60	6370778.47
10	57° 27.798' N	6° 47.880' W	632086.38	6371101.16
11	57° 29.001' N	6° 47.808' W	632086.38	6373334.70
12	57° 31.943' N	6° 44.327' W	635381.73	6378904.24
13	57° 32.624' N	6° 41.855' W	637805.07	6380251.18
14	57° 32.353' N	6° 39.253' W	640417.27	6379837.76
15	57° 33.260' N	6° 39.342' W	640270.69	6381516.24
16	57° 33.460' N	6° 38.017' W	641578.92	6381932.94
17	57° 31.530' N	6° 37.890' W	641830.25	6378357.96
18	57° 32.039' N	6° 41.803' W	637893.81	6379168.67
19	57° 31.426' N	6° 43.597' W	636141.96	6377970.48
20	57° 28.819' N	6° 47.068' W	632836.59	6373020.69
21	57° 28.200' N	6° 47.105' W	632836.59	6371872.08
22	57° 28.157' N	6° 44.660' W	635282.57	6371872.08
23	57° 27.186' N	6° 44.439' W	635563.52	6370078.91
24	57° 27.200' N	6° 45.190' W	634811.55	6370078.91
25	57° 27.578' N	6° 45.742' W	634237.32	6370762.04
26	57° 27.819' N	6° 46.359' W	633605.26	6371189.62
27	57° 27.375' N	6° 47.756' W	632236.11	6370319.53
28	57° 26.244' N	6° 48.283' W	631776.33	6368204.70
29	57° 25.644' N	6° 48.962' W	631133.31	6367071.02
30	57° 24.725' N	6° 50.374' W	629775.15	6365319.90
31	57° 24.395' N	6° 51.815' W	628351.41	6364661.98
32	57° 24.159' N	6° 55.171' W	625005.81	6364119.91
33	57° 23.187' N	7° 0.629' W	619593.06	6362153.44
34	57° 21.685' N	7° 3.764' W	616532.12	6359276.74
35	57° 21.463' N	7° 4.359' W	615947.84	6358848.61
36	57° 20.853' N	7° 7.793' W	612536.22	6357620.90
37	57° 21.479' N	7° 16.497' W	603778.42	6358551.59
38	57° 22.062' N	7° 16.355' W	603893.71	6359636.52
39	57° 21.633' N	7° 10.381' W	609902.21	6358997.99
40	57° 21.260' N	7° 7.863' W	612445.50	6358374.71
41	57° 21.824' N	7° 4.690' W	615596.68	6359508.69