

NOTICE TO MARINERS

Date of notice:	27 th January 2026
Notice Number:	LT91-SSEN-MAR-XX-CO-MC-NTM001
Issued by:	Scottish Hydro Electric Transmission Plc. Trading as Scottish and Southern Electricity Networks Transmission (SSENT)
Activity Type:	Landing Craft Activity
Area of Operations:	Kyle Rhea
<i>Coordinates for the activities are attached below.</i>	

Skye Reinforcement Project

Landing Craft Activity

Introduction

Mariners are advised that vessel activity is planned as part of the Skye Reinforcement project. A landing craft will be departing from the Kyle of Lochalsh slipway and landing on the beach at the area shown below on Loch Alsh to offload plant. The activity is required to facilitate enabling works and ground investigation work in the Kyle Rhea area. The described activities are planned to be completed within one day between the 1st February 2026 and 15th February 2026.

The vessel activities are being carried out by Milligan Transport Ltd, working for RJ McLeod, contractors employed by SSEN Transmission on the Skye Reinforcement Project.

The area of work, pertaining to this Notice to Mariners (NtM), is highlighted in Figure 1. Vessel contact details and project contact details provided below.

Departure and Landing Locations

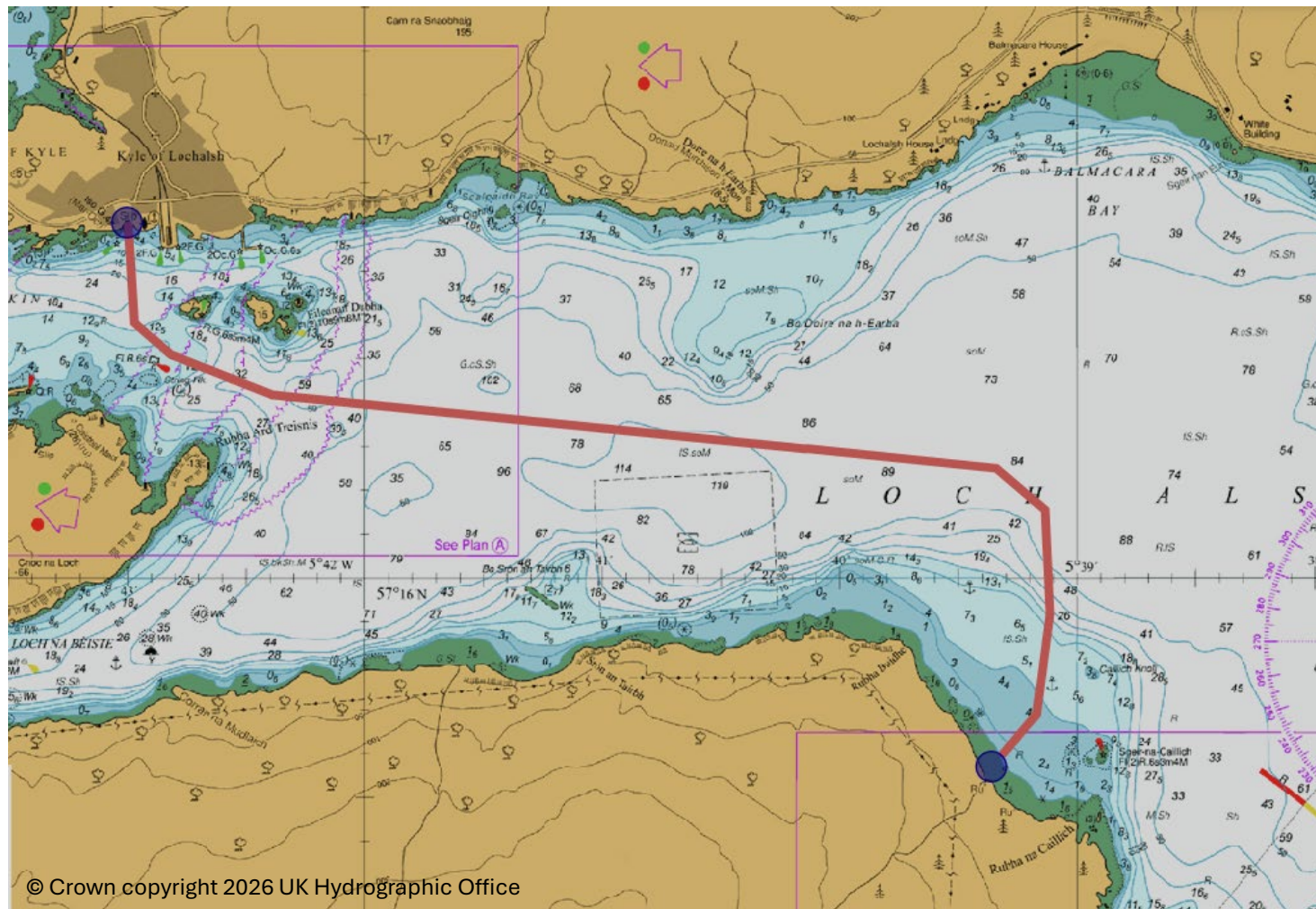


Figure 1 Vessel departure and landing locations

Please note the red line shows only an indicative vessel passage.

Survey Coordinates

The vessel will depart from Kyle of Lochalsh slipway and will land on the beach and offload plant at the location on Sger Na Calich beach at the co-ordinate locations below:

Vertice ID	Latitude (DDM)	Longitude (DDM)
Start location	57° 16.806' N	5° 43.012' W
Landing location	57° 15.555' N	5° 39.227' W

Navigational Safety Advice

Vessels are requested to pass at a safe speed and distance, and fishing vessels are advised to remain a safe distance from the areas identified. During these works the vessel will have restricted manoeuvrability as it completes its work scope.

VHF CH 16 will be monitored at all times and will be used to contact the coastguard in the event of an emergency.


Vessel details

The vessel activities are being carried out by Milligan Transport Ltd using the following vessels:

Landing craft: Spanish John (MMSI 235010076; Call Sign VQQM2)

Vessel and contact details are given in Table 1 below.

Table 1: Landing craft details

Landing vessel – Spanish John (Milligan Transport Ltd)		
	Call sign	VQQM2
	MMSI	235010076



Contact Details:

Further enquiries should be addressed to the following contacts:

Company	Contact details
RJ McLeod	Site Manager Stephen Moore 07909232507
Milligan Transport Ltd	Bridge Contact Jamie Milligan 07946238724
Milligan Transport Ltd	Emergency Contact Greig Milligan 07900564475
SSEN Transmission	SSENT Construction Manager Roddy MacPherson +44(0)7790357401

Legal Notice:

Please be advised that this Notice to Mariners should be treated as official notice of the nature, duration and location of the works which are scheduled to take place. During the period of this notice, we request that you plan your activities around our short-term, temporary activities.