

17 December 2025

METOCEAN EQUIPMENT DEPLOYMENT IN NW SKYE AND SOUTH UIST

NOTICE TO MARINERS

Revisions		
Revision	Comment	Date
01	Issue original document	04/12/2025
02	Deployment date updated to 21/12/2025	17/12/2025

INTRODUCTION

Partrac Ltd., on behalf of Jan De Nul and Scottish & Southern Electricity Networks (SSEN), is deploying a metocean seabed frame mooring at three landfall sites for an interconnector cable project between NW Skye and South Uist. The seabed frame sites are located in Holmar Bay (Uist), Ardmore Bay (Skye) and Meanish Pier in Loch Pooltiel (Skye). Details of deployment positions are provided below in Table 1 and Figures 1 to 3, and each frame will be deployed for 30 days.

Partrac is planning to carry out the frame deployments from 21 December 2025 over two days, weather permitting, using the vessel *C-Force* (Figure 5).

During deployment activities, the vessel will be restricted in their ability to manoeuvre and will display the appropriate lights and shapes prescribed by the International Regulations for Preventing Collisions at Sea. Other vessels are requested to provide a minimum clearance of 50m from the installation vessel during operations, and post-installation, and to pass at a safe speed.

Table 1: Seabed frame deployment coordinates.

Site Name	WGS84 (DDM)	
	Latitude	Longitude
Holmar Bay (South Uist)	57° 21.613'N	007° 15.613'W
Meanish Pier, Loch Pooltiel (Skye)	57° 27.783'N	006° 45.123'W
Ardmore Bay (Skye)	57° 32.687'N	006° 38.335'W

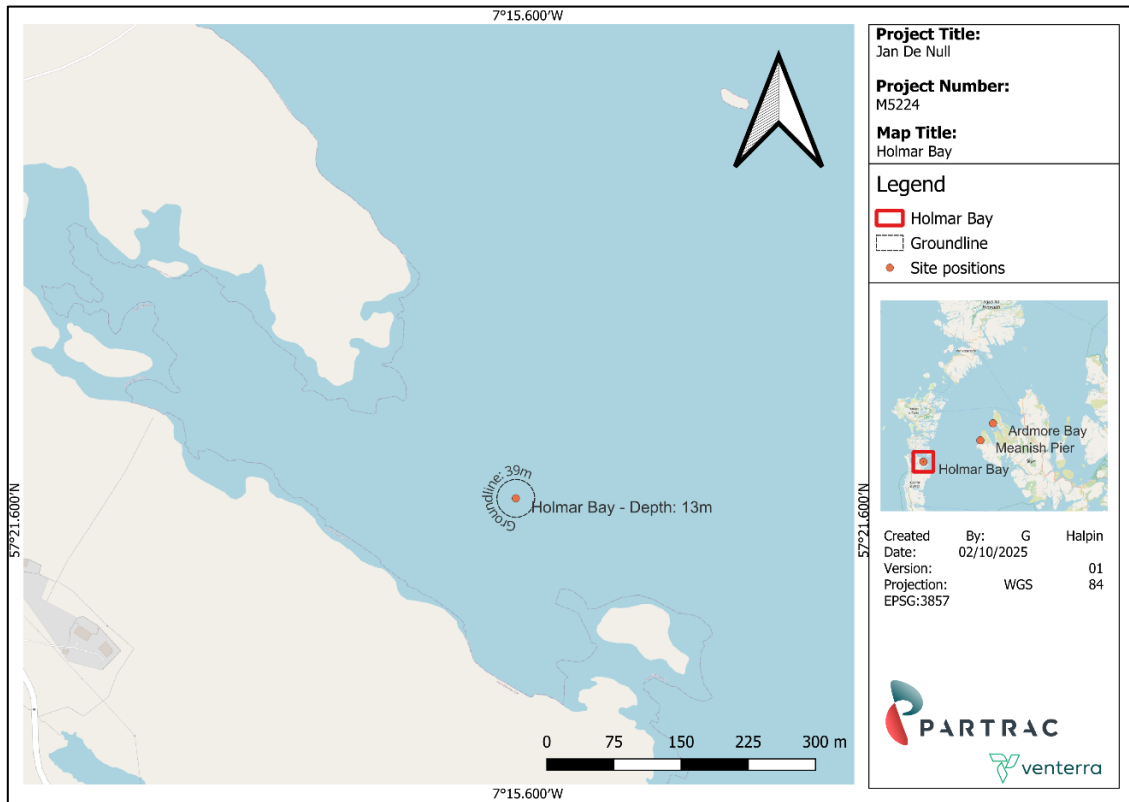


Figure 1: Holmar Bay site.

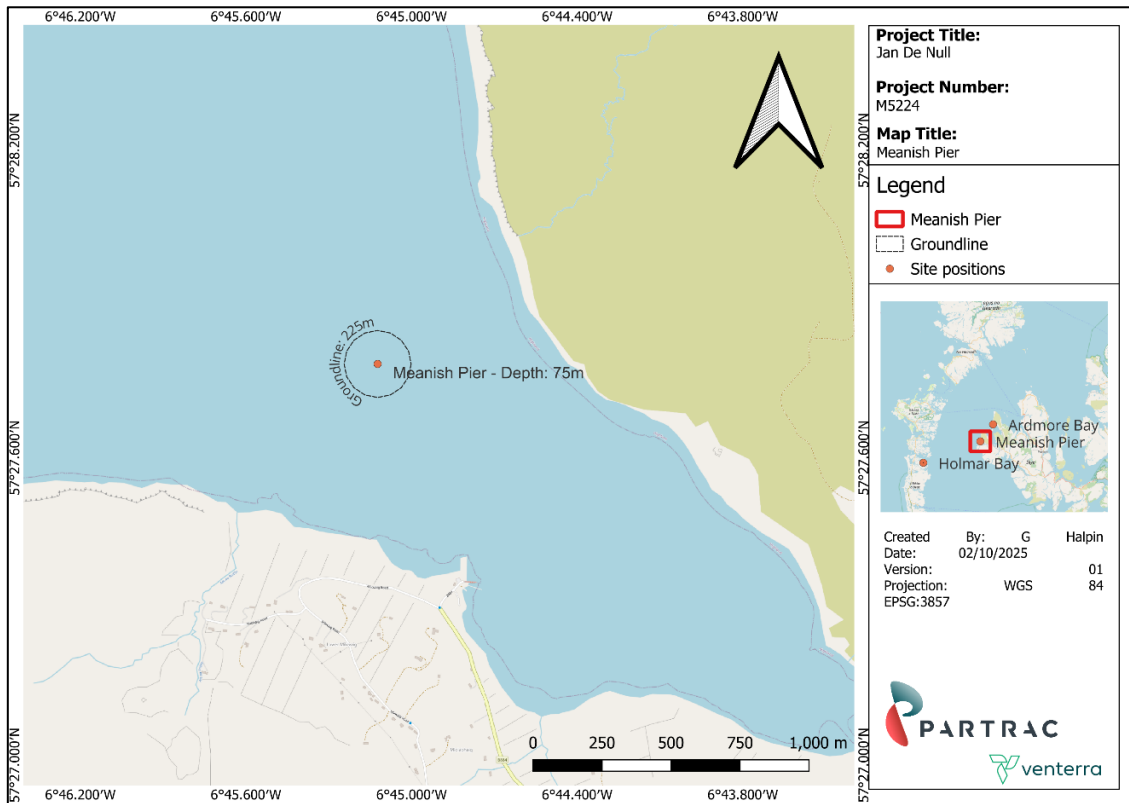


Figure 2: Meanish Pier site, Loch Pooltiel.

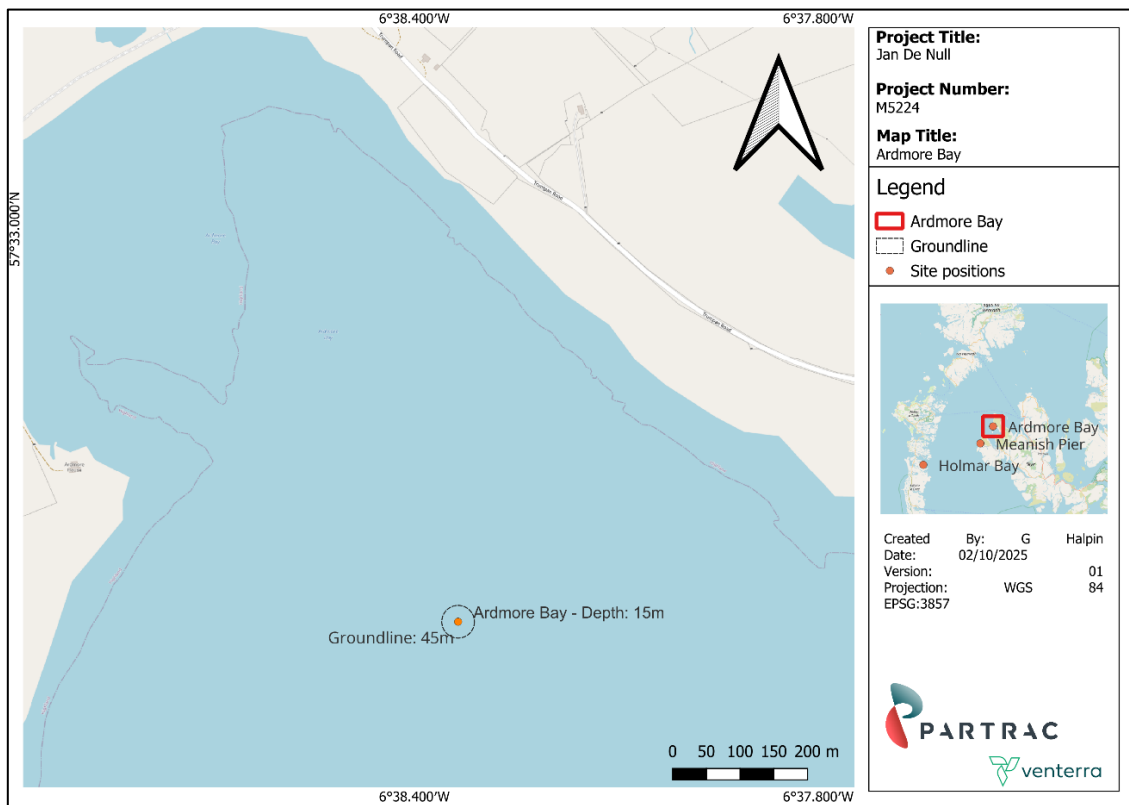


Figure 3: Ardmore Bay site.

SEABED FRAMES

The seabed frame to be deployed at each of the three sites is shown in Figure 4.



Figure 4: Seabed frame.

VESSEL – C-FORCE

The seabed frame deployment activities at site will be completed using the vessel *C-Force* (Figure 5).

Call Sign MITT4
MMSI Number 232033970



Figure 5: Vessel – C-Force.

CONTACTS

For further information please contact:

Partrac Ltd.

Kevin Ransom

+44 (0) 1626 906 673

kevin.ransom@venterra-group.com

Joey Mitchell

+44 (0) 1626 906 673

Joey.Mitchell@venterra-group.com