

West Kintyre – Port Ellen Cable Route Survey

XOCEAN Notice to Mariners

Date of Issue:

- Original issue: 13<sup>th</sup> June 2025
- Revision 1 issue: 24<sup>th</sup> June 2025 (Updated with x1 USV changed from the original issue)
- **Revision 2 Issue 23<sup>rd</sup> July 2025 (Updated to cover next phases of the survey)**

**Survey Activities:** Following the collection of survey data using USVs, XOCEAN is chartering 2 vessels to conduct both geotechnical and environmental seabed investigations along the proposed cable route corrido outlined in Figure 1.

The geotechnical works will take place first involving the vessel *Forth Constructor* which will deploy equipment to test and sample the seabed at approximately 1km intervals across the full route corridor.

Following this, the environmental works will be conducted using the vessel *Benthic Surveyor* which will deploy a towed camera system and collect samples of the seabed at intervals along the route corridor. The vessel will be operational 12hrs a day with it then anchoring

**Dates/Duration:** Vessel operations are expected to commence from 6<sup>th</sup> August. It is expected that the survey activities shall be completed by 20<sup>th</sup> August (subject to weather conditions) for both scopes referenced above.

**Survey Area:** Figure 1 below indicates the operational area which is shown by the red boundary. This is outlined in Table 1 below also.

Figure 1: Survey corridor and overall working area

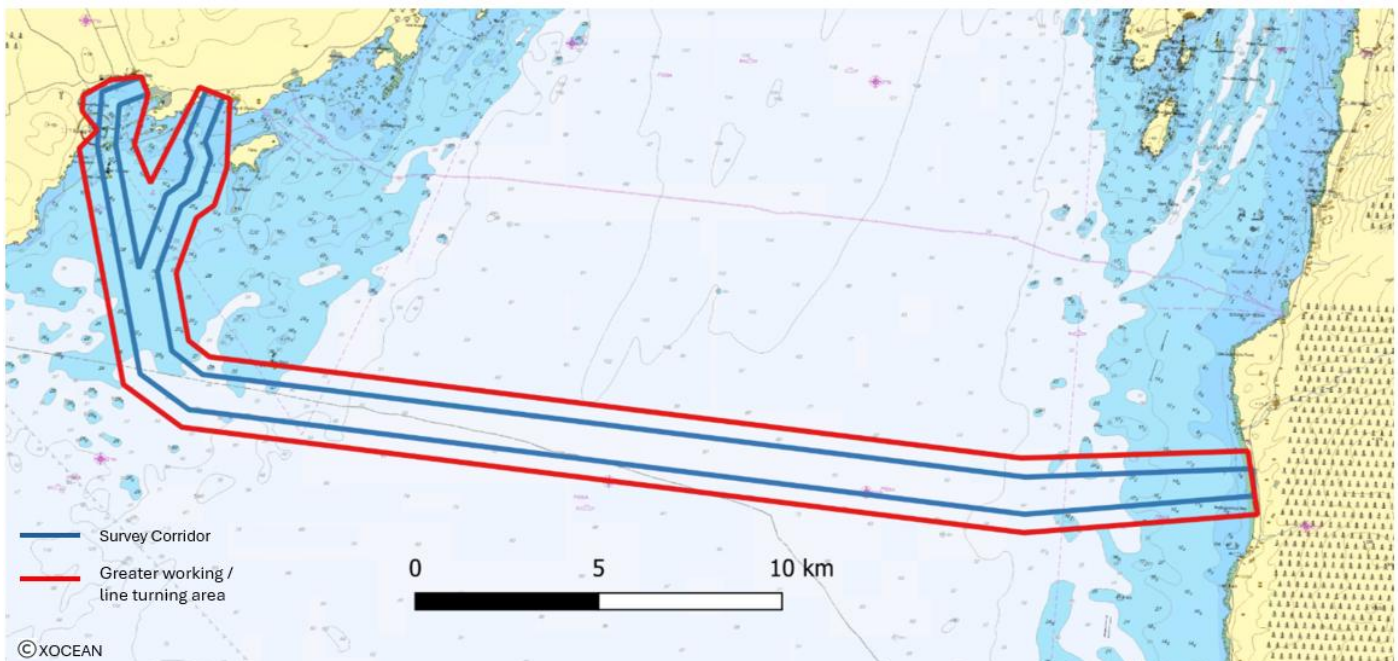


Table 1: Operational area coordinates (WGS84)

Degrees		Degree Minutes	
Lat	Long	Lat	Long
55.634° N	6.193° W	55° 38.030' N	6° 11.558' W
55.633° N	6.206° W	55° 37.966' N	6° 12.360' W
55.629° N	6.217° W	55° 37.724' N	6° 13.046' W
55.625° N	6.218° W	55° 37.492' N	6° 13.058' W

## NOTICE TO MARINERS

Commercial in Confidence

55.620° N	6.211° W	55° 37.222' N	6° 12.632' W
55.616° N	6.218° W	55° 36.939' N	6° 13.091' W
55.559° N	6.194° W	55° 33.514' N	6° 11.663' W
55.549° N	6.168° W	55° 32.926' N	6° 10.100' W
55.532° N	5.803° W	55° 31.913' N	5° 48.167' W
55.539° N	5.702° W	55° 32.316' N	5° 42.142' W
55.554° N	5.708° W	55° 33.241' N	5° 42.456' W
55.550° N	5.805° W	55° 33.005' N	5° 48.314' W
55.566° N	6.158° W	55° 33.976' N	6° 9.465' W
55.570° N	6.167° W	55° 34.200' N	6° 10.028' W
55.586° N	6.174° W	55° 35.179' N	6° 10.425' W
55.600° N	6.166° W	55° 35.999' N	6° 9.971' W
55.603° N	6.159° W	55° 36.198' N	6° 9.517' W
55.613° N	6.154° W	55° 36.755' N	6° 9.236' W
55.629° N	6.154° W	55° 37.765' N	6° 9.236' W
55.632° N	6.167° W	55° 37.918' N	6° 10.045' W
55.608° N	6.187° W	55° 36.482' N	6° 11.200' W
55.617° N	6.194° W	55° 37.039' N	6° 11.665' W
55.630° N	6.190° W	55° 37.782' N	6° 11.373' W

Table 3: MV Forth Constructor – Geotechnical Scope Vessel



Forth Constructor	
<b>MMSI:</b>	232053877
<b>Callsign:</b>	MOWV8
<b>Length:</b>	39.99m
<b>Beam:</b>	12.40m
<b>Speed:</b>	11kts (Max)
<b>Draught:</b>	2.65m
<b>Tonnage:</b>	636 GT

Table 4: Benthic Surveyor – Environmental Scope Vessel



Benthic Surveyor	
<b>MMSI:</b>	235004240
<b>Callsign:</b>	ZIQN2
<b>Length:</b>	18.00m
<b>Beam:</b>	6.00m
<b>Speed:</b>	10kts (Max)
<b>Draught:</b>	1.30m

**Exclusion Area / Closest Point of Approach:** Seafarers are kindly ask to provide a clearance of >500m from the vessels when in operation.

#### XOCEAN Marine & Operations Contact Details:

Name & Role	Mobile Number	Email Address
<b>Adam Harding</b> Project Manager	+44 7821 484975	<a href="mailto:adam.harding@xocean.com">adam.harding@xocean.com</a>
<b>Anthony O'Toole</b> Marine Superintendent	+353 1 223 9957	<a href="mailto:anthony.otoole@xocean.com">anthony.otoole@xocean.com</a>
<b>Oliver Harris</b> Head of Projects	+44 (0) 2080 982108	<a href="mailto:oliver.harris@xocean.com">oliver.harris@xocean.com</a>
<b>MV Forth Constructor</b>	+44 (0) 1592 872939 / VHF Ch16	N/A
<b>MV Benthic Surveyor</b>	+44 (0) 7712 899388 / VHF Ch16	N/A

#### Fishing Liaison Officers:

Fishing liaison for the operations will be co-ordinated by Blackhall & Powis Ltd. For any commercial fishery queries please contact the Company Fishing Liaison Officers (CFLOs):

Name	Contact Number	Email
Tommy Finn	07787 503119	<a href="mailto:tommy.finn@blackhallpowis.com">tommy.finn@blackhallpowis.com</a>

The local Fishing Industries Representative (FIR) will also be in place to liaise with the vessels and fishing operations in the survey area.

## NOTICE TO MARINERS



Commercial in Confidence

Name	Contact Number	Email
Angus (Gus) McGregor Newman	07768 340627	<a href="mailto:angusnewman@islay-sea-adventures.co.uk">angusnewman@islay-sea-adventures.co.uk</a>

### Legal Notice

Please be advised that this Notice to Mariners should be treated as official notice of the nature, duration and location of the works which are scheduled to take place. During the period of this notice, we request that you plan your activities around our short-term, temporary activities.

Any failure to remove equipment or entry into the identified location in a manner that would constitute a hazard may be a breach of your duties of safe seamanship as described in the Convention on International Regulations for Preventing Collisions at Sea 1972 and/or the Merchant Shipping Act 1995, and may result in removal of the relevant equipment. Failure to remove equipment or entry into the identified location in a manner that would constitute a hazard may constitute a breach of duty of care at common law, and a failure to protect submarine cables for successful seabed user co-existence under Scotland's National Marine Plan.

SHEPD shall found on this notice in the event of any damage, loss or disruption arising from failure to heed the information herein.