

Notice to Mariners

Vessels & General Safety Advice

Scottish Hydro Electric Power Distribution (SHEPD)

ED2 Campaign 2 & 3 Subsea Inspections

Date of Issue: 14th May 2025

PROJECT OVERVIEW

Please be advised that Aspect Land & Hydrographic Surveys Ltd (on behalf of SHEPD) will be undertaking subsea inspections of several cables across the West Highlands and Argyll marine areas. Please refer to Figure 1 - Figure 2 that highlights each cable location.

Given the different conditions and water depths anticipated at each site, a range of vessels will be available for the project, detailed overleaf.

The inspection works will be centred on a 50m cable corridor, defined by the start and end coordinates listed in Table 1.

| Circuit ID | Cable Name | Start Point | | End Point | |
|------------|----------------------------|----------------------|-----------------------|----------------------|-----------------------|
| | | Latitude [WGS 84] | Longitude [WGS 84] | Latitude [WGS 84] | Longitude [WGS 84] |
| SHEPD_111 | Kerrera - Mull 2 | 56° 24.450' N | 5° 32.667' W | 56° 25.850' N | 5° 39.383' W |
| SHEPD_109 | Kerrera - Mull Replacement | 56° 23.700' N | 5° 33.883' W | 56° 26.100' N | 5° 38.933' W |

TABLE 1 - CABLE LOCATIONS & COORDINATES

Start dates and anticipated durations listed against each individual location overleaf.

LOCATION DETAILS

Cable location and indicative survey corridors are noted below for information. Equipment calibration operations may take place out with the defined corridor and these areas will be chosen so as not to interfere with fishing / marine traffic activity.

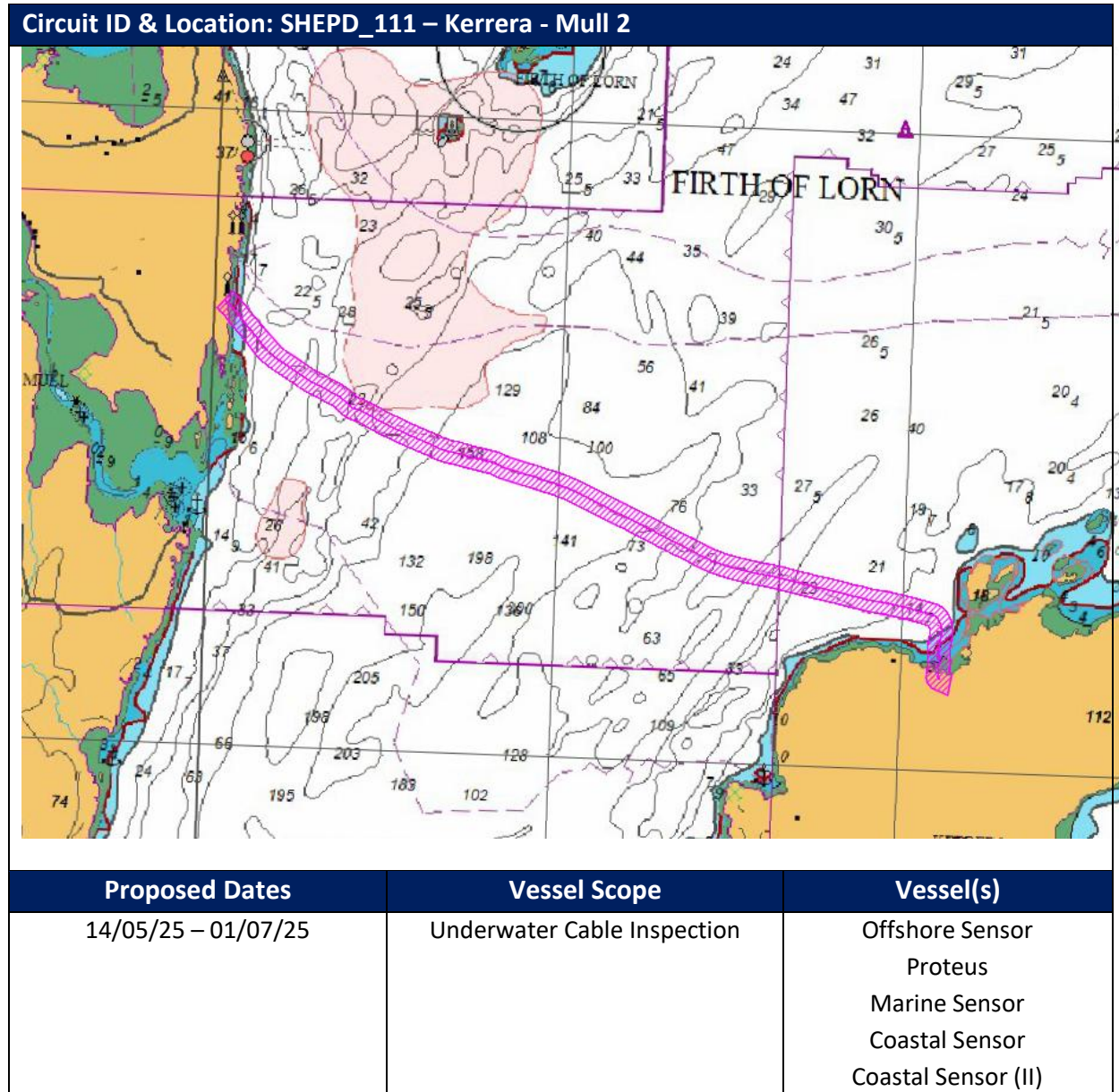
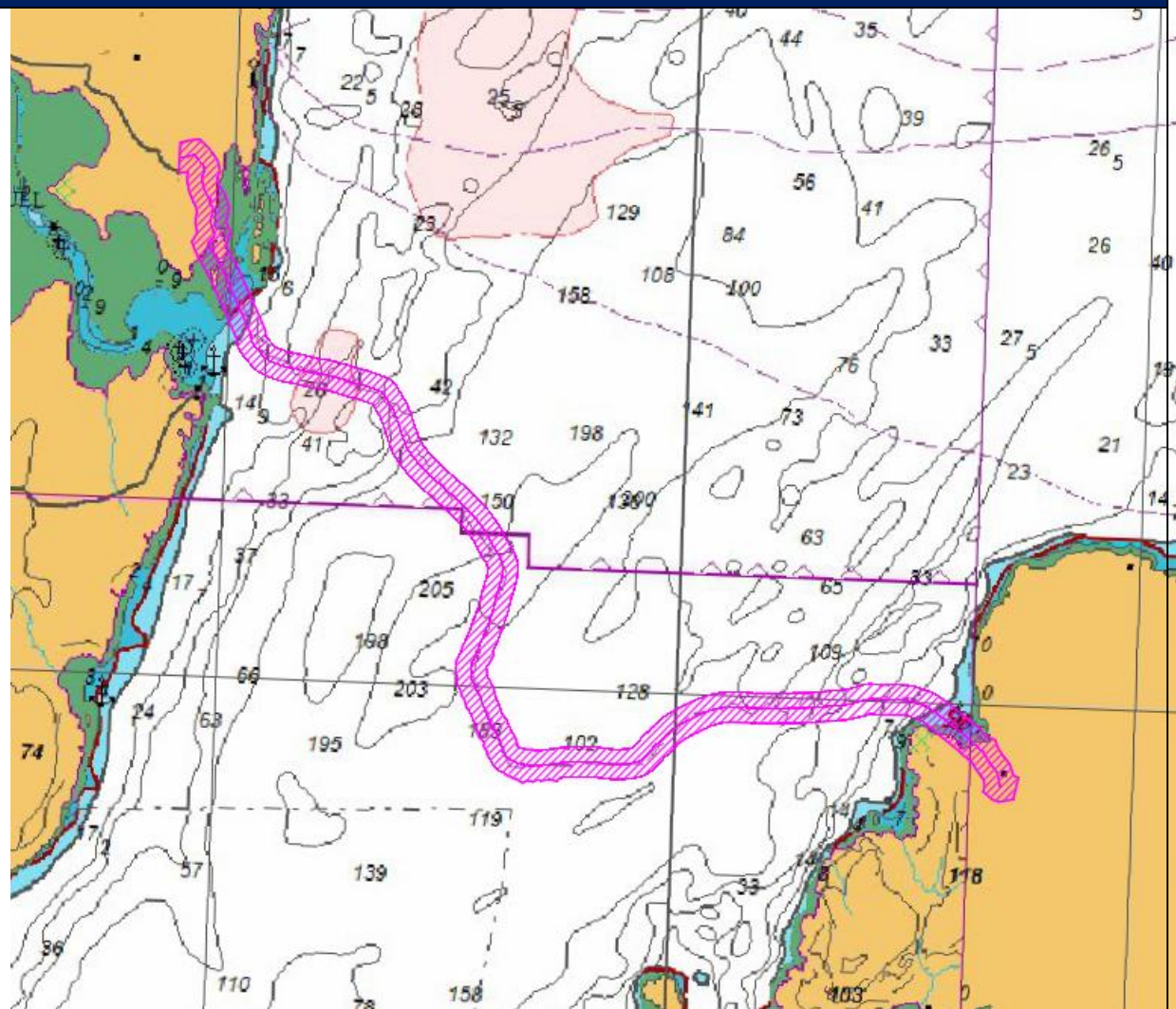


FIGURE 1 – SHEPD_111 – Kerrera - Mull 2

Circuit ID & Location: SHEPD_109 – Mainland - Kerrera



| Proposed Dates | Vessel Scope | Vessel(s) |
|---------------------|-----------------------------|--|
| 14/05/25 – 01/07/25 | Underwater Cable Inspection | Offshore Sensor Proteus Marine Sensor Coastal Sensor Coastal Sensor (II) |


FIGURE 2 – SHEPD_109 – Mainland - Kerrera


VESSEL DETAILS

The vessels conducting these works will be restricted in their ability to manoeuvre and will display the appropriate lights and shapes.

Other vessels are requested to pass at a safe speed and provide a minimum clearance of 500m (COLREGs Rule 16 & 18) during marine operations.

All vessels will monitor VHF Channel 16 throughout survey operations. Mobile contacts for the vessels are listed at the end of this NtM.

| Vessel Photo | Vessel Description |
|---|--|
|  | Offshore Sensor LOA: 22m Beam: 8m Draft: 1.85m Call Sign: MEGQ8 MMSI No: 232019172 VHF: 16 |
| Vessel Photo | Vessel Description |
|  | Proteus of Liverpool LOA: 14m Beam: 4.96m Draft: 1.3m Call Sign: 2HBL7 MMSI No: 235102268 VHF: 16 |

| Vessel Photo | Vessel Description |
|---|---|
|  | Marine Sensor LOA: 6.9m Beam: 2.5m Draft: 0.3m Call Sign: MLLR2 MMSI No: 235033255 VHF: 16 |

| Vessel Photo | Vessel Description |
|--|--|
|  | Coastal Sensor LOA: 6.1m Beam: 2m Draft: 0.3m Call Sign: 2BRB2 MMSI No: 235068593 VHF: 16 |

| Vessel Photo | Vessel Description |
|---|---|
|  | Coastal Sensor II LOA: 6.5m Beam: 2m Draft: 0.3m Call Sign: MAMM2 MMSI No: 232005897 VHF: 16 |

CONTACT DETAILS

Vessel management contact details are given in the table below.

| Name & Designation | Organisation | Contact Number | Email |
|---------------------------------------|--|--------------------------------|--|
| Stephen Scott Project Manager | Aspect Land & Hydrographic Surveys | 01294 313 399 07809 440 581 | sscott@aspectsurveys.com |
| Andrew McCormick Fleet Manager | Aspect Land & Hydrographic Surveys | 01294 313 399 07796 171 320 | amccormick@aspectsurveys.com |
| Scott Norman HSEQ Manager | Aspect Land & Hydrographic Surveys | 01294 313 399 07516 801 268 | snorman@aspectsurveys.com |
| Craig Stephenson Technical Manager | Aspect Land & Hydrographic Surveys | 01294 313 399 07780 977 568 | cstephenson@aspectsurveys.com |
| General Office | Aspect Land & Hydrographic Surveys | 01294 313 399 | mail@aspectsurveys.com |

FISHING LIAISON OFFICERS (FLOs)

Fishing liaison for the survey operations will be co-ordinated by Brown and May Marine (BMM). For any commercial fishery queries please contact the Company Fishing Liaison Officer (CFLO) Alex Winrow-Giffin (07760 160039 / alex@brownmay.com).

The vessel master will issue regular broadcasts whilst survey works are ongoing to ensure minimal disruption and that vessels maintain an appropriate and safe distance.

The local Fishing Industries Representative (FIR) is George White who can be contacted via 07761 873 965, georgewhite0@gmail.com and will also be in place to liaise with the vessels and fishing operations in the area.

DISTRIBUTION LIST

The Distribution List of the Notice to Mariners is as per the stakeholder list in the SHEPD Fisheries Liaison and Management Action Plan (FLMAP).