

Notice to Mariners

Vessels & General Safety Advice

Scottish Hydro Electric Power Distribution (SHEPD)

Eriskay – Barra Cable Replacement Cable Route

Date of Issue: 22nd April 2025

PROJECT OVERVIEW

Please be advised that Aspect Land & Hydrographic Surveys Ltd (on behalf of SHEPD) will be undertaking subsea surveys in the Outer Hebrides marine area. Please refer to Figure 1 that highlights the survey area. The surveys are scheduled to commence on the week commencing Monday 12th May 2025, and be completed by August 2025.

Given the different conditions and water depths anticipated at each site, a range of vessels will be available for the project, detailed overleaf.

The survey will centre on a 700m corridor, defined by the coordinate list shown below in Table 1 to include the cable route (marked as red in Figure 1) and vessel turning area (marked as blue in Figure 1).

Point Number	Latitude [WGS 84]	Longitude [WGS 84]
1	N57°02'38.45974"	W7°25'34.09007"
2	N57°02'32.39251"	W7°23'30.10262"
3	N57°02'50.96107"	W7°22'03.67253"
4	N57°03'06.43309"	W7°20'18.06870"
5	N57°04'09.42056"	W7°19'52.16687"
6	N57°04'23.82691"	W7°19'38.60293"
7	N57°04'50.23116"	W7°18'24.57087"
8	N57°04'31.28679"	W7°18'01.79673"
9	N57°04'08.40519"	W7°19'06.42096"

10	N57°02'56.05754"	W7°19'31.26243"
11	N57°02'45.54143"	W7°20'00.84547"
12	N57°02'29.51163"	W7°21'50.06279"
13	N57°02'09.43993"	W7°23'25.33894"
14	N57°02'15.91288"	W7°25'39.41209"

TABLE 1 - CABLE LOCATIONS & COORDINATES

Start dates and anticipated durations listed against each individual location overleaf.

LOCATION DETAILS

The survey corridor is noted below for information. Equipment calibration operations may take place out with the defined corridor and these areas will be chosen so as not to interfere with fishing / marine traffic activity.

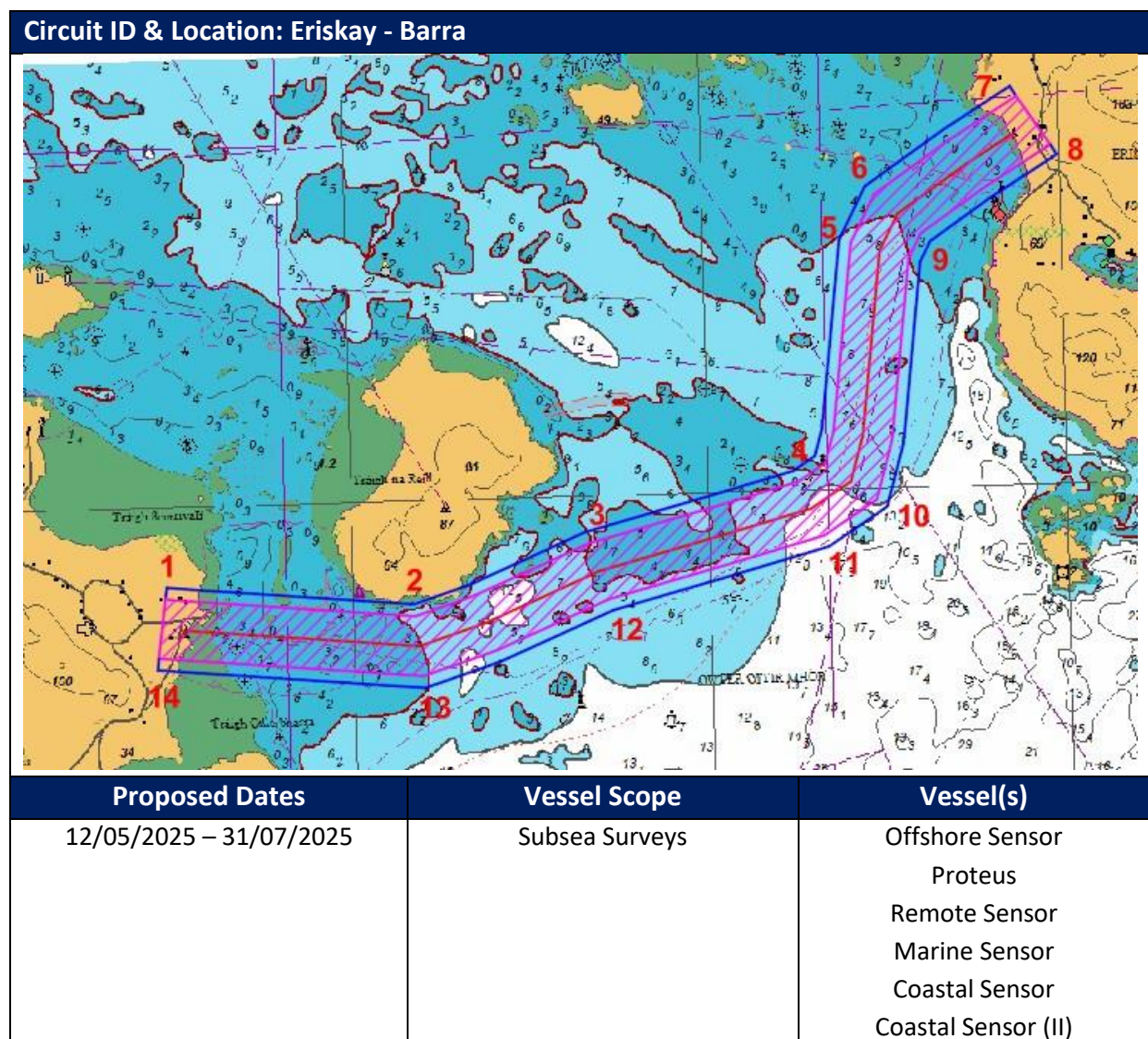



FIGURE 1 – ERISKAY TO BARRA

VESSEL DETAILS


The vessels conducting these works will be restricted in their ability to manoeuvre and will display the appropriate lights and shapes.


Other vessels are requested to pass at a safe speed and provide a minimum clearance of 500m (COLREGs Rule 16 & 18) during marine operations.

All vessels will monitor VHF Channel 16 throughout survey operations. Mobile contacts for the vessels are listed at the end of this NtM.

Vessel Photo	Vessel Description
	Offshore Sensor LOA: 22m Beam: 8m Draft: 1.85m Call Sign: MEGQ8 MMSI No: 232019172 VHF: 16

Vessel Photo	Vessel Description
	Proteus LOA: 14m Beam: 4.96m Draft: 1.3m Call Sign: 2HBL7 MMSI No: 235102268 VHF: 16

Vessel Photo	Vessel Description
	<p>Remote Sensor</p> <p>LOA: 8.2m</p> <p>Beam: 2.9m</p> <p>Draft: 0.3m</p> <p>Call Sign: MQAM3</p> <p>MMSI No: 235052176</p> <p>VHF: 16</p>

Vessel Photo	Vessel Description
	<p>Marine Sensor</p> <p>LOA: 6.9m</p> <p>Beam: 2.5m</p> <p>Draft: 0.3m</p> <p>Call Sign: MLLR2</p> <p>MMSI No: 235033255</p> <p>VHF: 16</p>

Vessel Photo	Vessel Description
	Coastal Sensor LOA: 6.1m Beam: 2m Draft: 0.3m Call Sign: 2BRB2 MMSI No: 235068593 VHF: 16

Vessel Photo	Vessel Description
	Coastal Sensor II LOA: 6.5m Beam: 2m Draft: 0.3m Call Sign: MAMM2 MMSI No: 232005897 VHF: 16

CONTACT DETAILS

Vessel management contact details are given in the table below.

Name & Designation	Organisation	Contact Number	Email
Stephen Scott Project Manager	Aspect Land & Hydrographic Surveys	01294 313 399 07809 440 581	sscott@aspectsurveys.com
Andrew McCormick Fleet Manager	Aspect Land & Hydrographic Surveys	01294 313 399 07796 171 320	amccormick@aspectsurveys.com
Scott Norman HSEQ Manager	Aspect Land & Hydrographic Surveys	01294 313 399 07516 801 268	snorman@aspectsurveys.com

Craig Stephenson Technical Manager	Aspect Land & Hydrographic Surveys	01294 313 399 07780 977 568	cstephenson@aspectsurveys.com
General Office	Aspect Land & Hydrographic Surveys	01294 313 399	mail@aspectsurveys.com

FISHING LIAISON OFFICERS (FLOs)

Fishing liaison for the survey operations will be co-ordinated by Brown and May Marine (BMM). For any commercial fishery queries please contact the Company Fishing Liaison Officer (CFLO) Meg Kalafat (07702 710176 / Meg.Kalafat@brownmay.com).

The vessel master will issue regular broadcasts whilst survey works are ongoing to ensure minimal disruption and that vessels maintain an appropriate and safe distance.

The local Fishing Industries Representative (FIR) is Alex John Murray who can be contacted via alexjohnmurray@aol.com and will also be in place to liaise with the vessels and fishing operations in the area.

DISTRIBUTION LIST

The Distribution List of the Notice to Mariners is as per the stakeholder list in the SHEPD Fisheries Liaison and Management Action Plan (FLMAP).