

# Notice to Mariners

## Vessels and General Safety Advice

### **Scottish Hydro Electric Power Distribution (SHEPD) Subsea Cable Route Survey**

**Date of Issue: 10<sup>th</sup> April 2025**

Please be advised that Briggs Marine Contractors (on behalf of SHEPD) will be undertaking route surveys to two proposed subsea cable routes, situated within the corridor identified in this Notice to Mariners (NtM).

Please refer to Figure 1 that shows the survey corridor boundary, coordinates are also listed in Table 4.

This work will utilise the vessel Mersey Guardian, which is detailed overleaf.


Survey campaign operations are expected to commence around 24<sup>th</sup> April and are expected to continue for 14 days.

### **Legal Notice**

Please be advised that this Notice to Mariners should be treated as official notice of the nature, duration and location of the works which are scheduled to take place. During the period of this notice, we request that you plan your activities around our short-term, temporary activities.

Any failure to remove equipment or entry into the identified location in a manner that would constitute a hazard may be a breach of your duties of safe seamanship as described in the Convention on International Regulations for Preventing Collisions at Sea 1972 and/or the Merchant Shipping Act 1995, and may result in removal of the relevant equipment. Failure to remove equipment or entry into the identified location in a manner that would constitute a hazard may constitute a breach of duty of care at common law, and a failure to protect submarine cables for successful seabed user co-existence under Scotland's National Marine Plan.

**SHEPD shall found on this notice in the event of any damage, loss or disruption arising from failure to heed the information herein.**

Vessel Photo	Vessel Description
	Mersey Guardian  Dimensions: <ul style="list-style-type: none"> <li>• 18.3m length</li> <li>• 6.3m beam</li> <li>• 1.15m max draft</li> </ul>

\*\*\*Please note: Vessel may be substituted with an equivalent\*\*\*

## Work Description

Survey operations will use the Mersey Guardian vessel. The vessel will acquire data from survey line plans around the proposed cable routes.

An additional larger operational area around the survey area will be utilised for vessel manoeuvring.

Survey work will be undertaken on a 12-hour daytime basis. During operations, the vessel will be restricted in its ability to manoeuvre.

Should any vessel wish to come within 500m of a survey vessel, then direct communication with the Master is required.

The vessel will display the appropriate lights / shapes for their operations.

## Primary Survey Equipment

Primary equipment	Towed / Hull mounted / Sampling	Approximate tow length (if applicable)	Vessel
Side scan sonar	Pole mounted	N/A	Mersey Guardian
Magnetometer	Towed	~20m up to 300m from stern of vessel	
USBL	Pole mounted	N/A	

**Table 1: Primary Equipment**

## Contact Details

The vessel contact details are given in the tables below:

Mersey Guardian	
MMSI	235091051
Call sign:	2FGL4
Project Manager	Suzanne Grimes
Email	sgrimes@briggsmarine.com
Tel	07834 739329

**Table 2: Vessel Contact Details**

## Fisheries Liaison Officers

Fisheries liaison for the cable route surveys will be co-ordinated by Brown and May Marine (BMM). For any commercial fishery queries please contact the Company Fisheries Liaison Officer (CFLO's) Alex Winrow-Giffin on 07760 160039, [alex@brownmay.com](mailto:alex@brownmay.com) or Meg Kalafat on 07702 710176, [meg.kalafat@brownmay.com](mailto:meg.kalafat@brownmay.com). The local Fishing Industries Representative (FIR) George White (07761 87396), [georgewhite0@gmail.com](mailto:georgewhite0@gmail.com) will also be in place to liaise with the vessels and fishing operations in the area.

## Further Details

Further enquiries should be addressed to the following person:

Name	Contact Number	Email
Finlay MacQuarrie - SSEN Project Manager	0787 938 7839	Finlay.MacQuarrie@sse.com

**Table 3: SSEN Contact Details**

## Distribution List

Any stakeholders identified within the relevant Fishing Liaison Management Action Plan (FLMAP), will be included on the distribution list for this NtM.

## Cable Route Overview

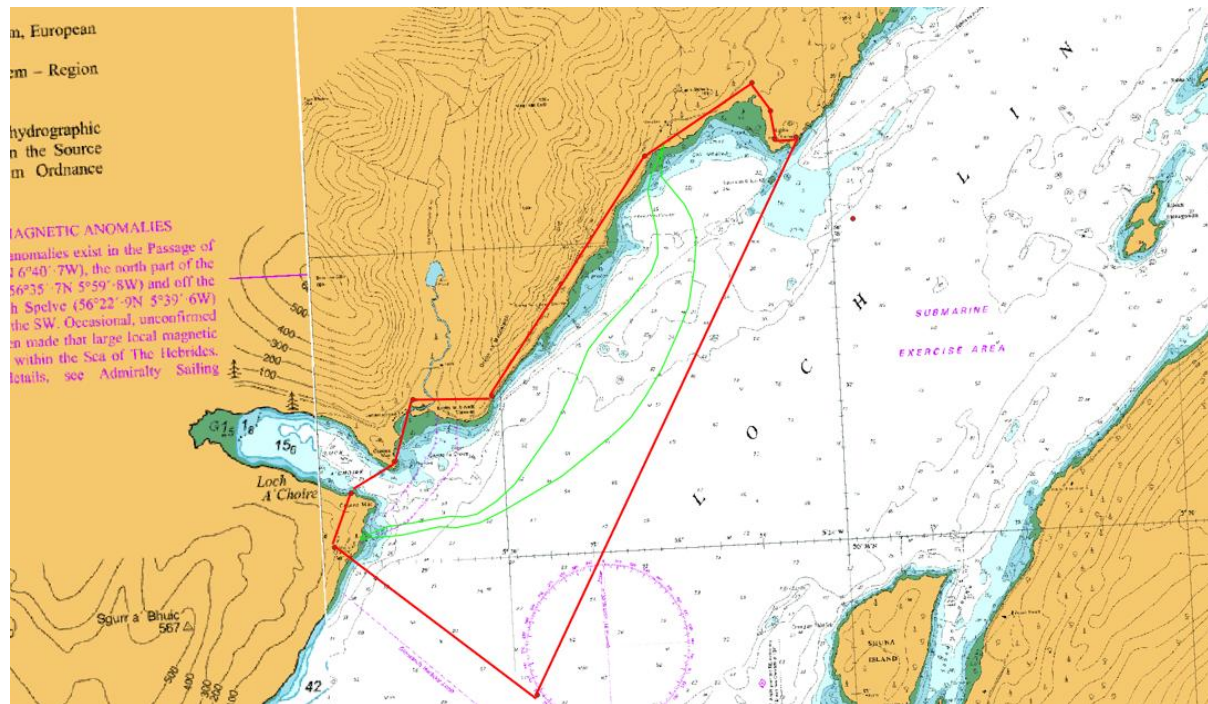


Figure 1: Loch A'Choire survey corridor, please note subsea cable routes shown in green and boundary shown in red. \*\*Extract taken from Admiralty Chart only for information, not to be used for navigation purposes\*\*

Extent	Latitude (WGS84)	Longitude (WGS84)	Vessel
Loch A'Choire	56° 36.463455' N	5° 29.822152' W	Mersey Guardian
	56° 36.653473' N	5° 29.296173' W	
	56° 37.048024' N	5° 29.039861' W	
	56° 37.045234' N	5° 28.109121' W	
	56° 38.543739' N	5° 26.164922' W	
	56° 38.98095 N	5° 24.85702' W	
	56° 38.792796' N	5° 24.655855' W	
	56° 38.609259' N	5° 24.622531' W	
	56° 38.616124' N	5° 24.372068' W	
	56° 38.06891' N	5° 23.75081' W	
	56° 35.0985' N	5° 27.75492' W	
56° 36.11886' N	5° 30.051' W		

Table 4: Survey operational corridor in Geodetic Datum WGS84