

Issue Date	01/04/2025
Activity	Commencement of Geophysical Survey
Notice to Mariners Number	5
Revision	1
Document Reference	MCW-DWF-ENV-PRO-RHS-000001
Author	Calum Billings
Contact Details	Senior Project Manager: Kiera Wilson – <a href="mailto:kiera.wilson@scottishpower.com">kiera.wilson@scottishpower.com</a> +44 7788 130401 Senior Geophysical Engineer: Charlotte Plummer– <a href="mailto:cplummer@scottishpower.com">cplummer@scottishpower.com</a> +44 7741 112910

## SUMMARY

A geophysical survey is due to commence within the MachairWind Offshore Windfarm area to assist with the development of this project. A map of the area that will be surveyed (the 'Survey Area') is provided in the 'Activity Area' section of this document.

The geophysical survey (the 'Survey') will be undertaken by Sulmara from the Port of Larne with an earliest commencement date of the 15<sup>th</sup> April 2025 and has an expected completion date of the end of July 2025, weather dependent.

The MV Mainport Edge (Call Sign: V7A7352) will be used to undertake the Survey and will deploy both towed and hull mounted equipment in addition to drop-down cameras across the Survey Area.

**Mariners are requested to maintain a distance of 500 metres from the geophysical survey vessel**

## ACTIVITY DESCRIPTION

The geophysical survey will be undertaken within the Survey Area, with a 1.5 km buffer around it to allow the survey vessel to turn between survey lines (please refer to the map in the 'Activity Area' section below which displays both the Survey Area and 1.5 km buffer).

The MV Mainport Edge will use a range of acoustic and sonar sensors to investigate the seafloor and sub-surface, these will either be attached to the hull of the survey vessel or towed by the survey vessel for the duration of the geophysical survey.

The MV Mainport Edge will transmit regular automatic transmission system messages during the geophysical survey.

## PROGRAMME SCHEDULE

The earliest commencement date of the site investigation works is the 15<sup>th</sup> April 2025. The expected completion date of the site investigation works is the end of July 2025, weather dependent. A separate notice to mariners will be distributed on completion of the geophysical survey.

## VESSEL DETAILS

The MV Mainport Edge will be used to undertake the geophysical survey. Vessel details are provided in the table below.

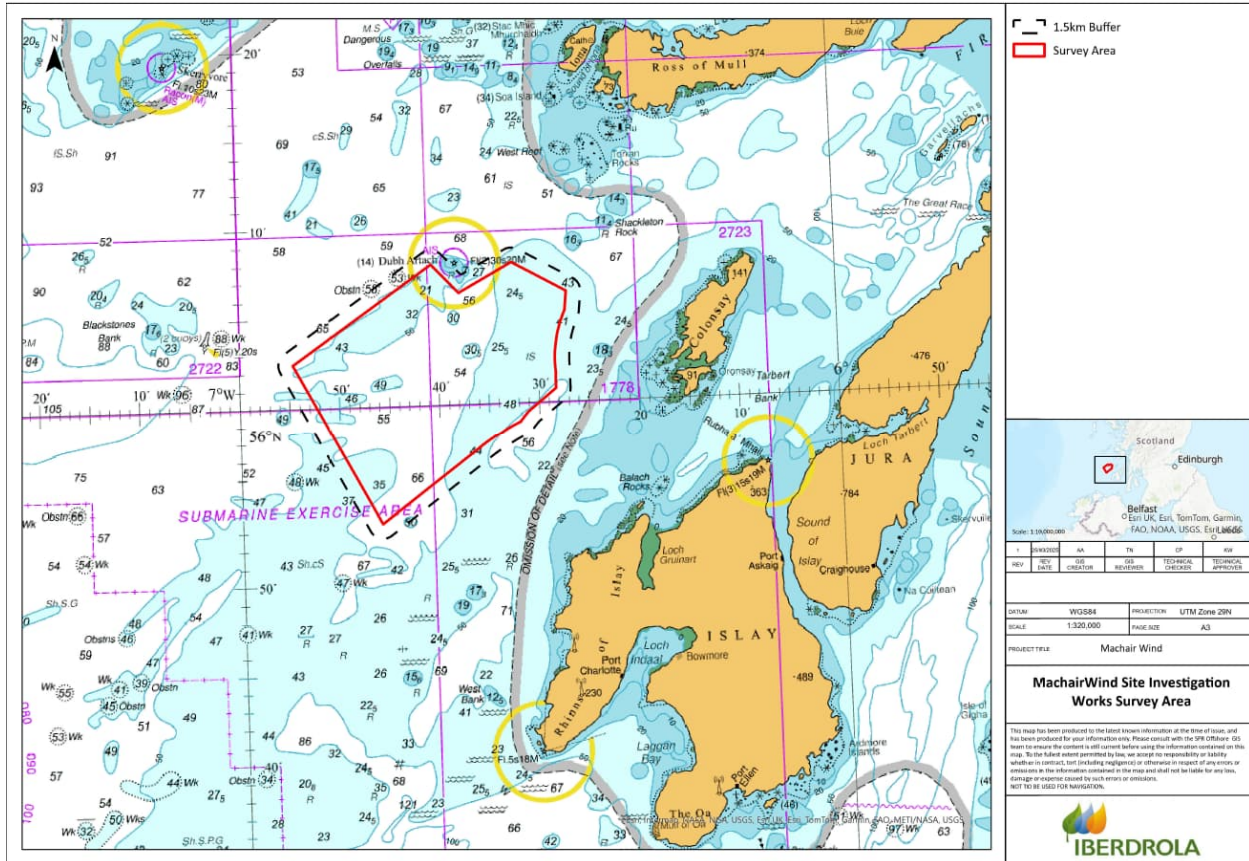
Name of Vessel	Mainport Edge
Call Sign	V7A7352
Maritime Mobile Service Identity	538010742
On Board Contact Details	Contact Name: Vessel Bridge Phone: (+353) 21 202 8011
Onshore Contact Details	Contact Name: George Hill Phone: +44 7717 496 082



## ACTIVITY AREA

The geophysical survey will be undertaken within the Survey Area presented below, with a 1.5 km buffer around it, to enable the MV Mainport Edge to turn between survey lines.

Boundary coordinates for the 1.5km buffer area shown below, are provided in Appendix 1.



## FISHERIES LIAISON CONTACT DETAILS

The Fisheries Liaison Officers (FLO) will be the following contacts from Brown and May Marine Limited:

### FISHERIES LIAISON OFFICER

Name	Zoe Lawrence
Phone Number	07923 138175
Email	Zoe@brownmay.com
Address	C/O Progress Way. Mid Suffolk Business Park, Eye, Suffolk. IP23 7HU

### FISHERIES LIAISON OFFICER

Name	Jonathan Keer
Phone Number	07850 604851
Email	jonathan@brownmay.com
Address	C/O Progress Way. Mid Suffolk Business Park, Eye, Suffolk. IP23 7HU

There will also be an offshore fisheries liaison officer on board the MV Mainport Edge for the duration of the geophysical survey. The offshore fisheries liaison officer can be contacted via the MV Mainport Edge.

## NOTICE TO MARINERS DISTRIBUTION LIST

A list of recipients for the Notice to Mariners is kept by the Project Team. If you wish to be added to this list, please contact the personnel whose contact details are set out on Page 1 of this Notice.

## APPENDIX 1 – BOUNDARY COORDINATES FOR 1.5KM SURVEY BUFFER

Longitude	Latitude
56° 07.11" N	006° 27.01" W
56° 06.87" N	006° 26.25" W
56° 06.84" N	006° 26.17" W
56° 06.81" N	006° 26.08" W
56° 06.77" N	006° 26.00" W
56° 06.73" N	006° 25.93" W
56° 06.69" N	006° 25.85" W
56° 06.64" N	006° 25.79" W
56° 06.59" N	006° 25.73" W
56° 06.54" N	006° 25.68" W
56° 06.48" N	006° 25.64" W
56° 06.43" N	006° 25.60" W
56° 06.37" N	006° 25.57" W
56° 06.31" N	006° 25.54" W
56° 06.26" N	006° 25.53" W
56° 06.20" N	006° 25.52" W
56° 06.14" N	006° 25.52" W
56° 06.08" N	006° 25.53" W
56° 04.99" N	006° 25.74" W
56° 04.93" N	006° 25.76" W
56° 04.87" N	006° 25.78" W
56° 04.82" N	006° 25.81" W
56° 04.76" N	006° 25.85" W
56° 04.62" N	006° 25.97" W
56° 04.53" N	006° 26.04" W
56° 04.39" N	006° 26.14" W
56° 04.17" N	006° 26.29" W
56° 03.94" N	006° 26.42" W
56° 03.82" N	006° 26.48" W
56° 03.68" N	006° 26.55" W
56° 03.53" N	006° 26.61" W
56° 03.34" N	006° 26.68" W
56° 03.08" N	006° 26.76" W
56° 02.95" N	006° 26.79" W
56° 02.74" N	006° 26.83" W
56° 02.60" N	006° 26.85" W
56° 02.42" N	006° 26.86" W
56° 02.19" N	006° 26.87" W
56° 02.01" N	006° 26.86" W
56° 01.88" N	006° 26.85" W
56° 01.71" N	006° 26.83" W

Longitude	Latitude
56° 01.63" N	006° 26.82" W
56° 01.57" N	006° 26.82" W
56° 01.45" N	006° 26.84" W
56° 01.33" N	006° 26.85" W
56° 01.21" N	006° 26.85" W
56° 00.94" N	006° 26.85" W
56° 00.77" N	006° 26.84" W
56° 00.71" N	006° 26.84" W
56° 00.65" N	006° 26.85" W
56° 00.60" N	006° 26.87" W
56° 00.54" N	006° 26.89" W
56° 00.48" N	006° 26.92" W
56° 00.43" N	006° 26.96" W
56° 00.37" N	006° 27.00" W
56° 00.32" N	006° 27.06" W
56° 00.27" N	006° 27.11" W
56° 00.23" N	006° 27.18" W
56° 00.18" N	006° 27.25" W
56° 00.14" N	006° 27.32" W
56° 00.11" N	006° 27.39" W
55° 58.90" N	006° 30.10" W
55° 58.80" N	006° 30.27" W
55° 58.66" N	006° 30.48" W
55° 58.40" N	006° 30.86" W
55° 58.35" N	006° 30.93" W
55° 58.31" N	006° 31.00" W
55° 58.27" N	006° 31.08" W
55° 58.24" N	006° 31.17" W
55° 58.21" N	006° 31.26" W
55° 58.18" N	006° 31.35" W
55° 58.09" N	006° 31.71" W
55° 58.02" N	006° 31.97" W
55° 57.92" N	006° 32.29" W
55° 57.81" N	006° 32.63" W
55° 57.75" N	006° 32.80" W
55° 57.59" N	006° 33.26" W
55° 57.47" N	006° 33.67" W
55° 57.37" N	006° 33.96" W
55° 57.29" N	006° 34.21" W
55° 57.20" N	006° 34.44" W
55° 57.14" N	006° 34.60" W
55° 56.97" N	006° 35.03" W
55° 56.88" N	006° 35.24" W

Longitude	Latitude
55° 56.76" N	006° 35.52" W
55° 52.73" N	006° 45.26" W
55° 52.69" N	006° 45.35" W
55° 52.67" N	006° 45.44" W
55° 52.64" N	006° 45.54" W
55° 52.62" N	006° 45.64" W
55° 52.61" N	006° 45.74" W
55° 52.60" N	006° 45.84" W
55° 52.59" N	006° 45.95" W
55° 52.59" N	006° 46.05" W
55° 52.59" N	006° 46.16" W
55° 52.60" N	006° 46.26" W
55° 52.61" N	006° 46.37" W
55° 52.62" N	006° 46.47" W
55° 52.64" N	006° 46.57" W
55° 52.66" N	006° 46.67" W
55° 52.69" N	006° 46.76" W
55° 52.72" N	006° 46.85" W
55° 52.76" N	006° 46.93" W
55° 52.79" N	006° 47.02" W
55° 52.83" N	006° 47.09" W
55° 52.88" N	006° 47.16" W
55° 52.92" N	006° 47.23" W
55° 52.97" N	006° 47.28" W
55° 53.02" N	006° 47.33" W
56° 02.08" N	006° 55.90" W
56° 02.13" N	006° 55.95" W
56° 02.18" N	006° 55.99" W
56° 02.24" N	006° 56.02" W
56° 02.30" N	006° 56.04" W
56° 02.36" N	006° 56.06" W
56° 02.41" N	006° 56.07" W
56° 02.47" N	006° 56.07" W
56° 02.53" N	006° 56.06" W
56° 02.59" N	006° 56.05" W
56° 02.65" N	006° 56.02" W
56° 02.71" N	006° 55.99" W
56° 02.76" N	006° 55.96" W
56° 02.81" N	006° 55.91" W
56° 02.87" N	006° 55.86" W
56° 02.92" N	006° 55.80" W
56° 02.96" N	006° 55.74" W
56° 03.01" N	006° 55.67" W

Longitude	Latitude
56° 03.05" N	006° 55.60" W
56° 03.09" N	006° 55.51" W
56° 03.12" N	006° 55.44" W
56° 08.55" N	006° 41.29" W
56° 08.58" N	006° 41.19" W
56° 08.61" N	006° 41.09" W
56° 08.63" N	006° 40.99" W
56° 08.65" N	006° 40.89" W
56° 08.67" N	006° 40.79" W
56° 08.68" N	006° 40.69" W
56° 08.69" N	006° 40.58" W
56° 08.69" N	006° 40.48" W
56° 08.69" N	006° 40.37" W
56° 08.68" N	006° 40.27" W
56° 08.67" N	006° 40.16" W
56° 08.65" N	006° 40.06" W
56° 08.64" N	006° 39.96" W
56° 08.61" N	006° 39.86" W
56° 08.59" N	006° 39.77" W
56° 08.56" N	006° 39.68" W
56° 08.52" N	006° 39.59" W
56° 08.48" N	006° 39.51" W
56° 08.43" N	006° 39.41" W
56° 07.26" N	006° 37.46" W
56° 08.59" N	006° 33.06" W
56° 08.61" N	006° 32.99" W
56° 08.63" N	006° 32.89" W
56° 08.65" N	006° 32.79" W
56° 08.66" N	006° 32.69" W
56° 08.67" N	006° 32.58" W
56° 08.68" N	006° 32.48" W
56° 08.68" N	006° 32.37" W
56° 08.68" N	006° 32.27" W
56° 08.67" N	006° 32.16" W
56° 08.66" N	006° 32.06" W
56° 08.65" N	006° 31.96" W
56° 08.63" N	006° 31.86" W
56° 08.61" N	006° 31.76" W
56° 08.58" N	006° 31.66" W
56° 07.11" N	006° 27.01" W