

Notice to Mariners

Vessels and General Safety Advice

Scottish Hydro Electric Power Distribution (SHEPD) Skye to South Uist Marine Surveys

Date of issue: 22/10/2024

This Notice to Mariners supersedes that issued on 24th September 2024. Due to altered route and survey scope the vessel turning requirements and operational corridor has been decreased in certain locations. This NtM reflects these changes.

Please be advised that A-2-Sea Solutions Ltd (on behalf of SHEPD) are undertaking a marine survey within the cable corridors described below. Surveys will utilise two vessels to complete survey operations:

- Mintaka 1
- FPV Morven

Offshore operations will have a planned minimum duration of 28 days, weather permitting. Nearshore operations will have a planned minimum duration of 28 days, weather permitting.

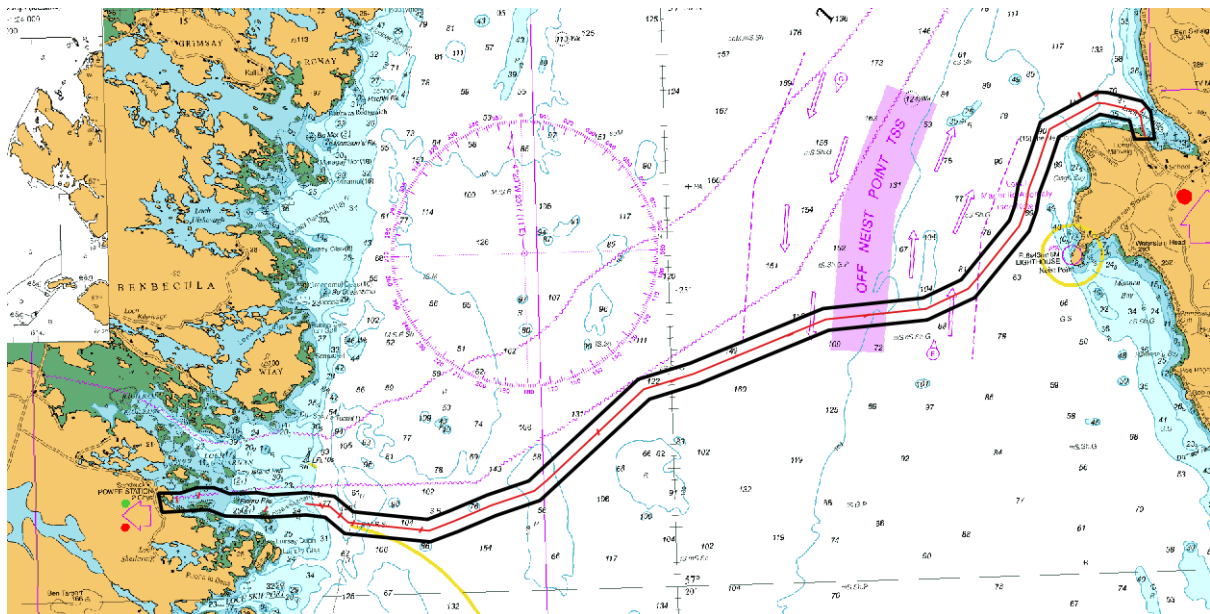


Figure 1: Survey Area Skye to Loch Carnan on South Uist Survey Corridor

The Skye to Loch Carnan on South Uist operations will be concentrated across the cable corridor within the boundary defined by the following coordinates.

Table 1: Survey Area Skye to Loch Carnan on South Uist Survey Corridor

Survey Area Skye to Loch Carnan on South Uist 1100m Survey Corridor					
Point	Datum	Latitude	D D.M	Longitude	D D.M
1	WGS84	57;28.13758N		006;46.39677W	
2	WGS84	57;28.12344N		006;46.05094W	
3	WGS84	57;27.95828N		006;44.96558W	
4	WGS84	57;27.77870N		006;44.70420W	
5	WGS84	57;27.31361N		006;44.60754W	
6	WGS84	57;27.31885N		006;45.23921W	
7	WGS84	57;27.63698N		006;45.37186W	
8	WGS84	57;27.75951N		006;46.29968W	
9	WGS84	57;27.40044N		006;47.61234W	
10	WGS84	57;26.84406N		006;47.99396W	
11	WGS84	57;26.83741N		006;47.99879W	
12	WGS84	57;26.47783N		006;48.27444W	
13	WGS84	57;26.16196N		006;48.38894W	
14	WGS84	57;25.82378N		006;48.63814W	
15	WGS84	57;24.72639N		006;50.40971W	
16	WGS84	57;24.37481N		006;51.92599W	
17	WGS84	57;24.25176N		006;55.02794W	
18	WGS84	57;23.40730N		006;59.17710W	
19	WGS84	57;23.17863N		007;00.70463W	
20	WGS84	57;21.51741N		007;04.22665W	
21	WGS84	57;21.28102N		007;05.63065W	
22	WGS84	57;21.03074N		007;06.82180W	
23	WGS84	57;20.86910N		007;07.69903W	
24	WGS84	57;21.04905N		007;10.37518W	
25	WGS84	57;21.33256N		007;10.96453W	
26	WGS84	57;21.38125N		007;11.56717W	
27	WGS84	57;21.35998N		007;12.71977W	
28	WGS84	57;21.39888N		007;14.10995W	
29	WGS84	57;21.50807N		007;14.59293W	
30	WGS84	57;21.51131N		007;14.86256W	
31	WGS84	57;21.48803N		007;16.07323W	
32	WGS84	57;21.81527N		007;16.17341W	
33	WGS84	57;21.80878N		007;15.65315W	
34	WGS84	57;21.80630N		007;15.47863W	
35	WGS84	57;21.88993N		007;14.96250W	
36	WGS84	57;21.88257N		007;14.42468W	
37	WGS84	57;21.77431N		007;13.94992W	
38	WGS84	57;21.77942N		007;13.07416W	

39	WGS84	57;21.73571N	007;12.65162W
40	WGS84	57;21.75883N	007;11.54278W
41	WGS84	57;21.68213N	007;10.66304W
42	WGS84	57;21.41308N	007;10.09287W
43	WGS84	57;21.24988N	007;07.76490W
44	WGS84	57;21.38325N	007;07.06985W
45	WGS84	57;21.63506N	007;05.87142W
46	WGS84	57;21.85242N	007;04.55986W
47	WGS84	57;23.52034N	007;01.03721W
48	WGS84	57;23.76317N	006;59.40886W
49	WGS84	57;24.62182N	006;55.18028W
50	WGS84	57;24.74857N	006;52.03687W
51	WGS84	57;25.03672N	006;50.81957W
52	WGS84	57;26.01260N	006;49.24842W
53	WGS84	57;26.25205N	006;49.06884W
54	WGS84	57;26.59402N	006;48.94152W
55	WGS84	57;26.97815N	006;48.64783W
56	WGS84	57;27.66140N	006;48.17509W
57	WGS84	57;28.13758N	006;46.39677W

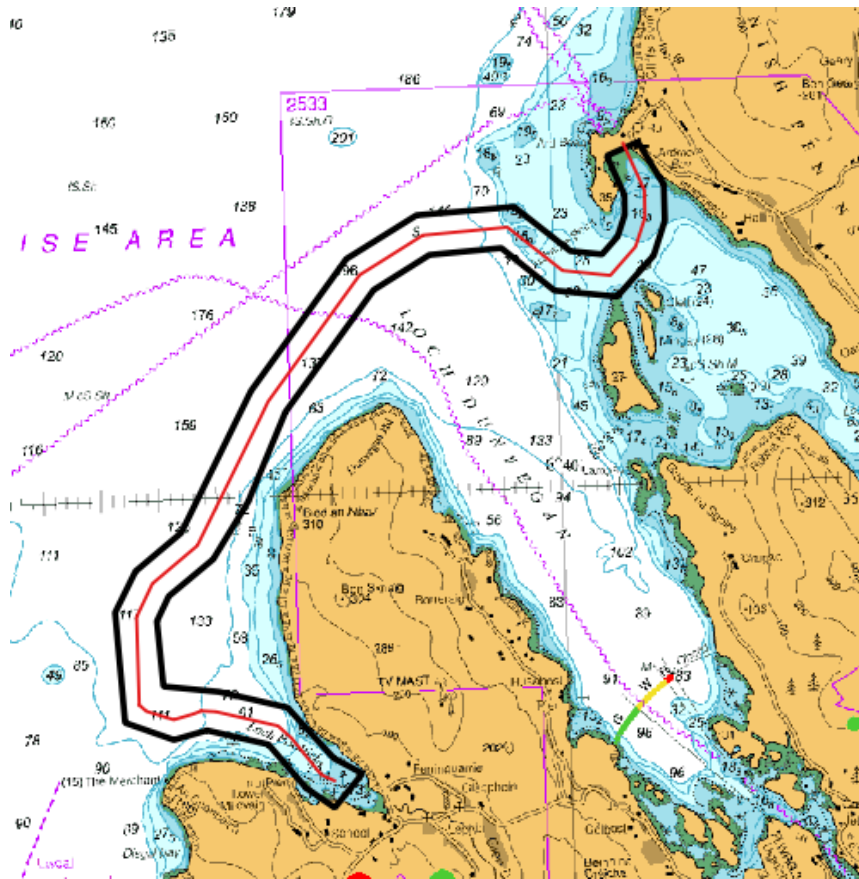


Figure 2: Survey Corridor Ardmore on Skye to Loch Pooltiel also on Skye



The Ardmore on Skye to Loch Pooltiel on Skye operations will be concentrated across the cable corridor within the boundary defined by the following coordinates.

Table 2: Survey Route Ardmore on Skye to Loch Pooltiel also on Skye

Survey Route Ardmore on Skye to Loch Pooltiel also on Skye 1100m Survey Corridor					
Point	Datum	Latitude	D D.M	Longitude	D D.M
1	WGS84	57;28.24649N		006;47.01859W	
2	WGS84	57;28.17951N		006;46.05567W	
3	WGS84	57;28.01139N		006;44.87853W	
4	WGS84	57;27.52195N		006;44.10145W	
5	WGS84	57;27.37176N		006;43.61453W	
6	WGS84	57;27.06005N		006;44.11657W	
7	WGS84	57;27.25238N		006;44.59973W	
8	WGS84	57;27.67260N		006;45.23027W	
9	WGS84	57;27.82270N		006;46.28829W	
10	WGS84	57;27.74375N		006;46.86711W	
11	WGS84	57;27.91846N		006;47.70481W	

12	WGS84	57;28.95206N	006;47.81739W
13	WGS84	57;29.33158N	006;47.44051W
14	WGS84	57;29.67659N	006;46.62617W
15	WGS84	57;30.98326N	006;45.33086W
16	WGS84	57;32.18801N	006;43.59647W
17	WGS84	57;32.57399N	006;42.35216W
18	WGS84	57;32.62160N	006;40.64972W
19	WGS84	57;32.19029N	006;39.69681W
20	WGS84	57;32.14956N	006;39.14744W
21	WGS84	57;32.31101N	006;38.86495W
22	WGS84	57;32.51127N	006;38.72991W
23	WGS84	57;32.69794N	006;38.72340W
24	WGS84	57;33.06859N	006;39.00533W
25	WGS84	57;33.18914N	006;38.45838W
26	WGS84	57;32.78077N	006;38.03189W
27	WGS84	57;32.44608N	006;38.03450W
28	WGS84	57;32.12118N	006;38.25099W
29	WGS84	57;31.74949N	006;38.90973W
30	WGS84	57;31.82679N	006;39.99760W
31	WGS84	57;32.24061N	006;40.89569W
32	WGS84	57;32.19938N	006;42.14886W
33	WGS84	57;31.88897N	006;43.14021W
34	WGS84	57;30.77643N	006;44.74320W
35	WGS84	57;29.94866N	006;45.44299W
36	WGS84	57;29.42157N	006;46.08292W
37	WGS84	57;29.08879N	006;46.87703W
38	WGS84	57;28.85855N	006;47.09683W
39	WGS84	57;28.24649N	006;47.01859W

The operations will be undertaken by the vessels Mintaka 1 and FPV Morven pictured below. The vessels may not commence their activities at the same time but may operate simultaneously at times over the duration of the operation. The vessels may operate primarily from [Mallaig] but may use other ports along the coastlines, such as [Ullapool] or [Stornoway].

Vessel Photo	Vessel Description
<p>Mintaka</p>  <p>The image shows the Mintaka 1, a blue and yellow survey vessel, at sea. It has a white cabin and a large yellow crane-like structure on the deck. The name 'MINTAKA 1' is visible on the side.</p>	<p>The Mintaka 1 is a multi-purpose survey vessel. 40 m in length with a beam of 6m and a draft of 2 m; transit speed of 12 kts and a survey speed of 4-6 kts. Operating on a 24-hour basis. Mintaka call sign is HO6142.</p> <p>Contact: Vsat +31 223705008 / Mob: +48 602421456</p>
<p>FPV Morven</p>  <p>The image shows the FPV Morven, a white survey vessel, at sea. It has a black hull and a white cabin. The text 'A-2-SEA SURVEY' and 'FPV MORVEN' are visible on the side.</p>	<p>The FPV Morven is a multi-purpose survey vessel. 20 m in length with a beam of 6m and a draft of 2 m; transit speed of 12 kts and a survey speed of 4-6 kts. Operating on a 24-hour basis. FPV Morven call sign is MBFQ6.</p> <p>Contact: 07723075399 / 07956319281</p>

Survey Description

The survey will involve collection of high-resolution geophysical seabed data and In-situ geotechnical sediment testing.

Other vessels should maintain an appropriate and safe distance of 500 m when passing the Mintaka 1 and FPV Morven vessel(s) whilst undertaking operations and should pass at the lowest possible speed to avoid vessel wash effects. The vessel(s) will be working 24-hour operations and will display appropriate day shapes and lights during reduced visibility and night operations. The vessel(s) will also monitor VHF Channels 16 and 12.

Primary Survey Equipment

Primary equipment	Towed, Hull mounted, Sampling	Approximate tow length (if applicable)	Vessel
Multibeam Echosounder	Hull mounted	N/A	Morven
Sidescan Sonar	Towed	50-450m	Morven
Magnetometer Array	Towed	50-450m	Morven
Grab sampler	Sampling	N/A	Mintaka
Drop Down Video	Towed	50-100m	Mintaka
CPT	Sampling	N/A	Mintaka
Vibrocore	Sampling	N/A	Mintaka

Contact Details

The vessel contact details are given in the tables below

VESSEL 1- Mintaka	
Call sign	HO6142
Bridge	Telephone Number: +31 (0) 223 705 008 (Sat)
Offshore manager / Party Chief	Ellie Roberts
Email	Gavin.loveridge@a2sea.co.uk
Onshore Site Manager	Gavin Loveridge

VESSEL 2- FPV Morven	
Call sign	MBFQ6
Bridge	+44 (0) 7723 075 399 (vessel) +44 (0) 7956 319 281 (vessel)
Offshore manager / Party Chief	Thomas Maw
Email	Gavin.loveridge@a2sea.co.uk
Onshore Site Manager	Gavin Loveridge

Fisheries Liaison Officers

Fishing liaison for the operations will be co-ordinated by Blackhall & Powis Ltd. For any commercial fishery queries please contact the Company Fishing Liaison Officers (CFLOs) :

Tommy Finn 07787 503119 tommy.finn@blackhallpowis.com

The local Fishing Industries Representative (FIR) will also be in place to liaise with the vessels and fishing operations in the survey area.

Ewen Grant 07990 506846 ewen@ewengrant.com

Further Details

Further enquiries should be addressed to the following people in the following order:

Name	Contact Number	Email
Christopher Briggs	+44(0) 1794 830 909 (Office)	Chris.briggs@a2sea.co.uk
Liam Flynn	+44(0) 1794 830 909 (Office)	Liam.flynn@a2sea.co.uk

Distribution List

Any stakeholders identified within the relevant Fishing Liaison Management Action Plan (FLMAP), will be included on the distribution list for this NtM.

Legal Notice

Please be advised that this Notice to Mariners should be treated as official notice of the nature, duration and location of the works which are scheduled to take place. During the period of this notice, we request that you plan your activities around our short-term, temporary activities.

Any failure to remove equipment or entry into the identified location in a manner that would constitute a hazard would be a breach of your duties of safe seamanship as described in the Convention on International Regulations for Preventing Collisions at Sea 1972 and/or the Merchant Shipping Act 1995 and may result in removal of the relevant equipment. Failure to remove equipment or entry into the identified location in a manner that would constitute a hazard may constitute a breach of duty of care at common law, and a failure to protect submarine cables for successful seabed user co-existence under Scotland's National Marine Plan.