

27 October 2023

Notice to Mariners Maritime Safety Information Recovery of scientific equipment in the Sound of Islay	
Organisation submitting information and for whom the work is being conducted	Angus MacLennan, Offshore Manager Tel: 0131 241 2000 Mob: 07435 650 103 angus.maclennan@novainnovation.com Nova Innovation Ltd, 45 Timber Bush, Edinburgh, EH6 6QH
Notes	
All positions are quoted in World Geodetic System 1984 [WGS84], lat. /long. degrees and decimal minutes.	
1 Details of work programme including period and purpose	
<p>A multi-category (“multicat”) workboat vessel, like the one pictured below, or similar, will recover two seabed instrumentation frames from the seabed in the Sound of Islay in November 2023, weather and tidal conditions permitting. The work will be conducted between 4 November and 25 November 2023. The equipment will be recovered during daylight hours and in a suitable weather and tidal window. Note that the two frames will be recovered from different locations within the Nova Innovation lease area in the Sound of Islay.</p>	
<p><i>Source: Leask Marine</i></p>	
<p>The two seabed instrumentation frames with associated ground line and clump weight have been deployed on the seabed. Each ballasted frame weighs around 370kg, measures approximately 1.5m x 1.5m x 1.5m and is connected to a 100kg clump weight and remotely actuated pop-up buoy via a 100m wire ground line.</p>	

2 Positions of maximum extent of projected works

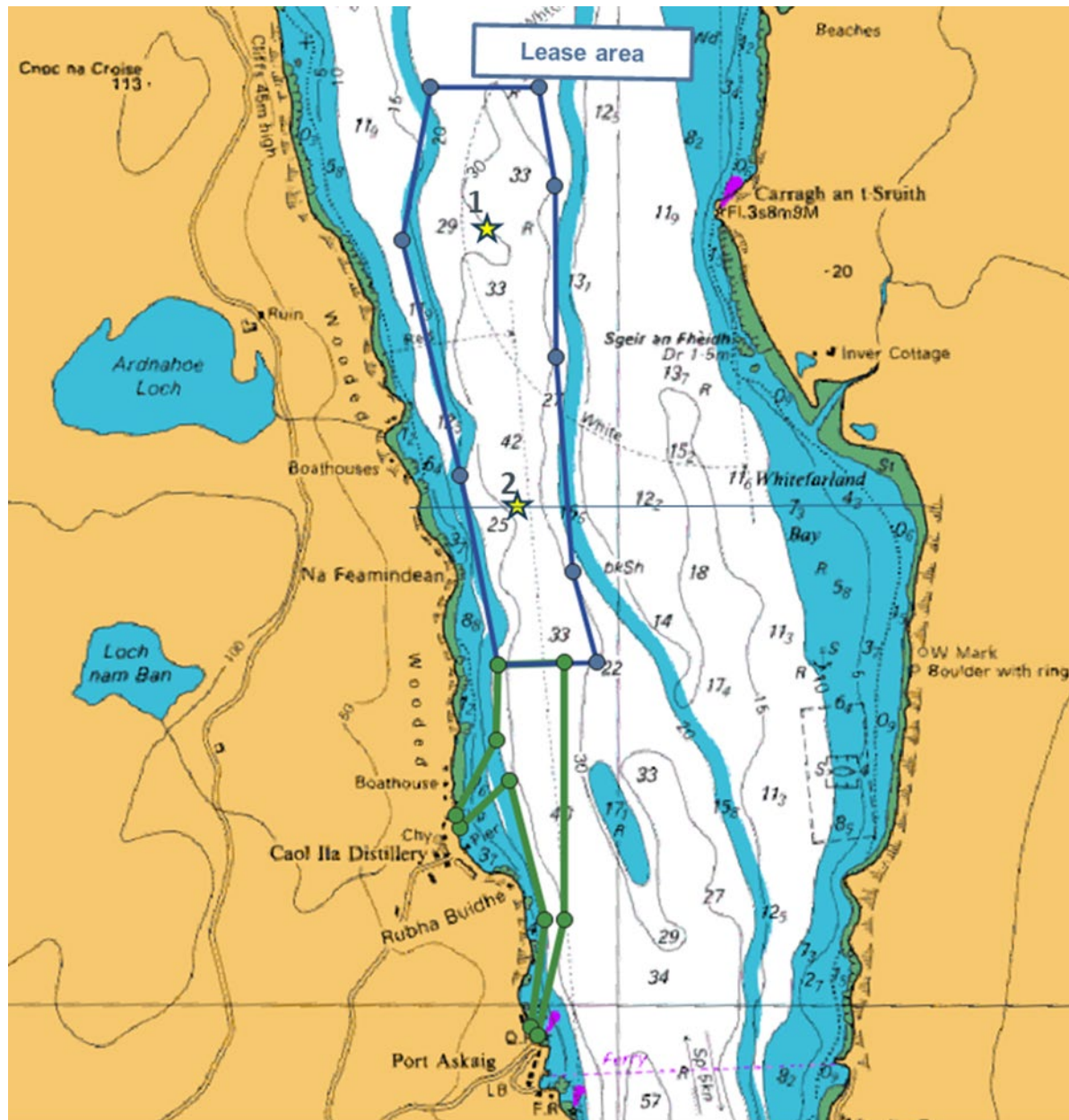
The two instrumentation frames will be recovered from the seabed at the following locations in the Sound of Islay:

Decimal degrees		Degrees and decimal minutes	
Latitude	Longitude	Latitude	Longitude
55.979167	-6.220278	55° 52. 405' N	6° 06. 433' W
56.111667	-6.221667	55° 51. 942' N	6° 06. 438' W

See online notice here: <https://kingfisherbulletin.org/notice-map?noticeid=3397>

Works locations (indicative):

Yellow stars indicate the location of the two instrumentation frames.



Source: Nova Innovation 2023 and Admiralty Charts

3 Details of lights, buoys and other navigational aids – positions / descriptions / whether temporary or permanent, and whether buoys likely to be submerged at certain states of the tide (if applicable)					
The instrumentation frames are currently sitting on the seabed in waters of at least 30 m depth, with no surface infrastructure such as buoys or markers.					
The vessel recovering the seabed instrumentation frames from the Sound of Islay will display the appropriate day marks, as required by the International Regulations for Preventing Collisions at Sea, and/or lights for vessels having their ability to manoeuvre restricted. Clump weights may be used to maintain moorings during on-site operations. The vessel and buoys will comply with all aspects of COLREGS where applicable.					
4 Proposed routes of vessels involved in operations (from port to site)					
The vessel will make passage to and from Port Askaig to the works area.					
5 Changes to existing route measures/vessel movement					
None					
6 Details of any areas to be avoided					
Mariners are requested to keep well clear of the vessels and work area.					
During operations, the vessel will be restricted in the ability to manoeuvre. It is requested that all vessels operating nearby keep their distance and pass at minimum speed.					
7 Details of any extraction areas or dumping grounds					
None					
8 Proposed position of devices and other associated features on completion of works					
See coordinates above.					
INSTRUCTIONS TO VESSELS					
The vessel involved will be keeping continuous listening watch on Channel 16 and will display appropriate lights and marks as required by the International Rules for Preventing Collisions at Sea.					
Mariners are requested to give the vessel a wide berth during recovery operations.					
Name:	Angus MacLennan	Signature:	By email	Date:	27/10/2023