

Atlantic Salmon Trust

NOTICE TO MARINERS

Deployment of Acoustic Receivers

PLANNED DEPLOYMENT

The Atlantic Salmon Trust will install **20 moorings in Loch Snizort during the w/b 10th April**. The moorings hold research equipment that support hydrophone receivers that log the acoustic ID tag transmitters. Below are a map and a table with the proposed locations of these moorings. We will deploy these moorings on the w/b **10th April 2023** and moorings will be removed by **the 31st July 2023**. The seabed is leased under a Crown Estate Scotland licence.

The hydrophones are located on the seabed and have no surface markers, and have riser lines with scientific instruments that extend vertically no more than 2m (LAT). These moorings will be recovered in their entirety. **As laid positions will be issued on deployment.**

If you trawl or dredge up a receiver (see photos), please do not throw it back into the water. Please retain it and contact bill@atlanticsalmontrust.org to arrange collection.

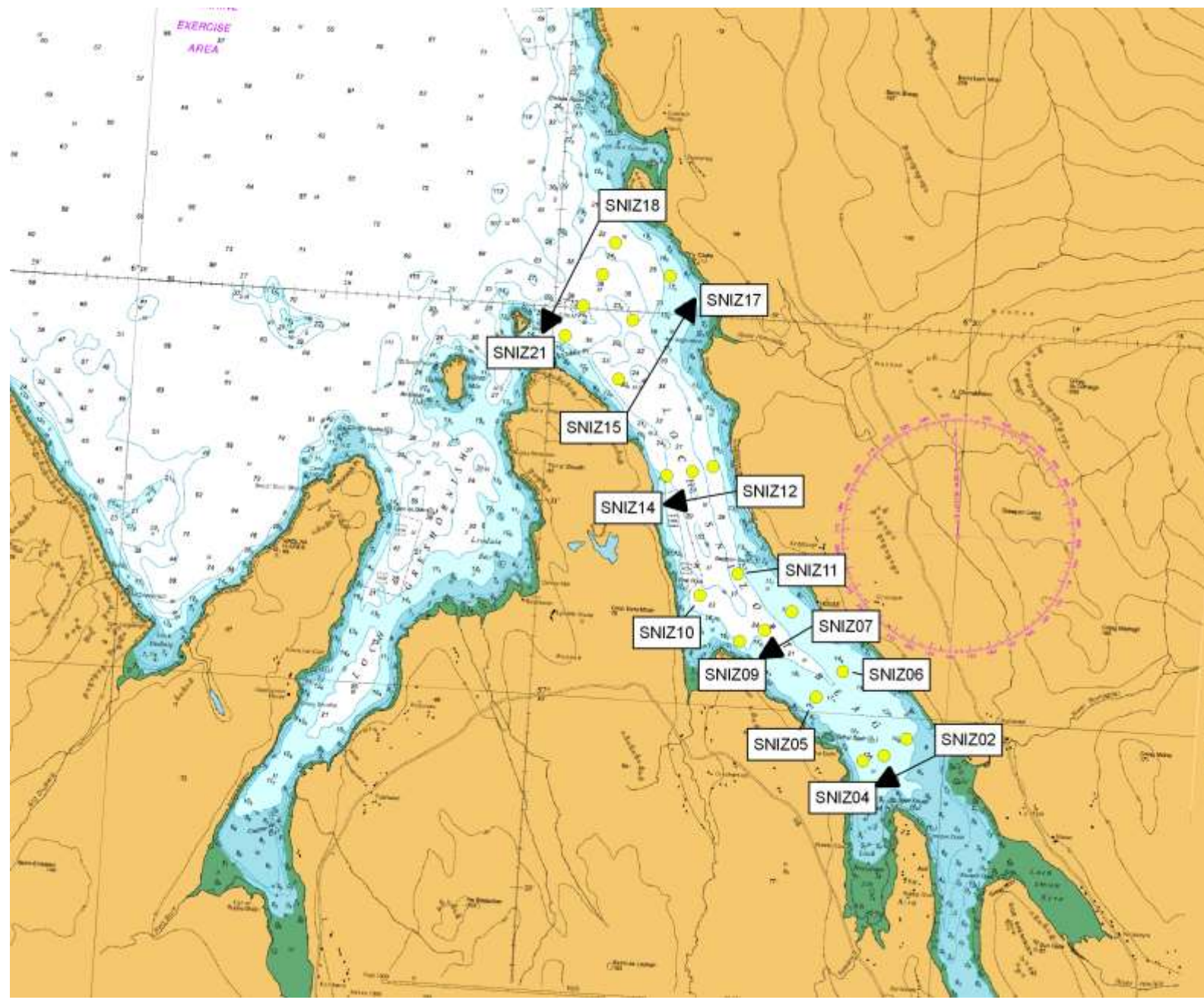
Project-related enquiries should be made to lorna@atlanticsalmontrust.org

PROPOSED MOORING POSITIONS: ACOUSTIC RECEIVER LOCATIONS

Location - Laxford	Depth (m)	lat_DD	long_DD	lat DM	long DM
SNIZ02	12	57.49823398	-6.339421811	57° 29.894 N	006° 20.365 W
SNIZ03	12	57.49667049	-6.342833602	57° 29.800 N	006° 20.570 W
SNIZ04	12	57.49610853	-6.346149587	57° 29.766 N	006° 20.768 W
SNIZ05	20	57.50131685	-6.354242916	57° 30.079 N	006° 21.254 W
SNIZ06	20	57.50365492	-6.350274244	57° 30.219 N	006° 21.016 W
SNIZ07	20	57.50850312	-6.359010723	57° 30.510 N	006° 21.540 W
SNIZ08	29	57.50676335	-6.363161542	57° 30.405 N	006° 21.789 W
SNIZ09	29	57.50568936	-6.367036471	57° 30.341 N	006° 22.022 W
SNIZ10	29	57.50939543	-6.373812544	57° 30.563 N	006° 22.428 W
SNIZ11	40	57.51144541	-6.368000253	57° 30.686 N	006° 22.080 W
SNIZ12	36	57.52050699	-6.373049039	57° 31.230 N	006° 22.382 W
SNIZ13	56	57.521433	-6.3717167	57° 31.286 N	006° 22.303 W
SNIZ14	30	57.51978	-6.3822167	57° 31.187 N	006° 22.933 W
SNIZ15	39	57.527633	-6.3933833	57° 31.658 N	006° 23.603 W
SNIZ16	45	57.533767	-6.3978667	57° 32.026 N	006° 23.872 W
SNIZ17	27	57.53659378	-6.381839658	57° 32.195 N	006° 22.910 W
SNIZ18	34	57.5414	-6.38915	57° 32.484 N	006° 23.349 W
SNIZ19	42	57.53905	-6.3997333	57° 32.343 N	006° 23.984 W
SNIZ20	47	57.53357948	-6.395407299	57° 32.957 N	006° 23.239 W
SNIZ21	36	57.529767	-6.3997667	57° 31.786 N	006° 23.986 W



S TO ND



which is
above
Water
European
see
Region
graphic
Source
reference

CHART ACCURACY
Owing to the age and quality of information, some detail on this chart may not be positioned accurately. Particular care should be advised when navigating in the area, especially in the dangers, even when using a positioning system such as GPS.

MARINE FARMS
Marine farms exist within the area shown. They may not all be shown individually on this chart. Positions may change frequently. They may be marked by lit or unlit buoys. Mariners are advised to avoid these areas and their associated moorings.